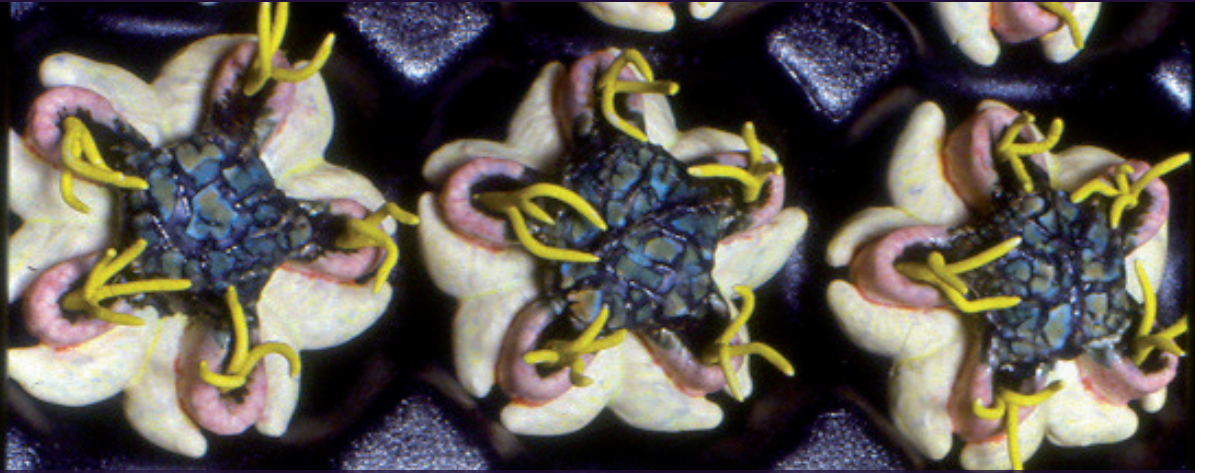
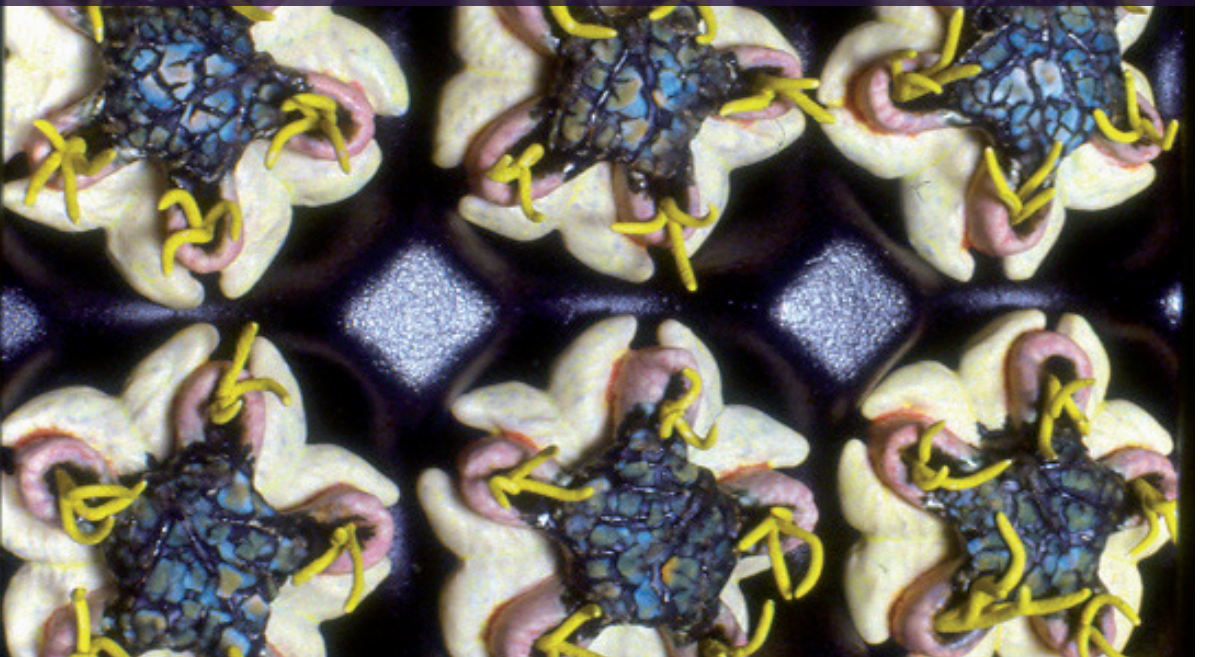


IVAN DOUGHERTY GALLERY
COLLEGE OF FINE ARTS



ANOTHER SILK ROAD



ANOTHER SILK ROAD

2 – 25 JULY

CURATOR

Jacqueline Clayton

ARTISTS

Jackson Li

Ching-Yuan Chang

Guang Hui Chen

Paul Mathieu

Ying-Yueh Chuang

Laurens Tan

Julie Bartholomew

Wenmin Li

Douglas Cham



[COVER IMAGE] YING-YUEH CHUANG, *TO BE... #1*, 2002, MULTIPLE GLAZE-FIRED PORCELAIN PAPER CLAY, 14 x 35 x 50 CM

PHOTOGRAPH: THE ARTIST. COURTESY THE ARTIST.

ANOTHER SILK ROAD

For centuries, the ancient network of trade routes known as The Silk Road traversed the Asian continent, connecting it to the Middle East, the Mediterranean world and Europe. These routes, the conduit for trade in luxury goods, became, also, an agent in the transmission of technology, ideas and cultural traditions between the powerful civilisations of Europe and those of the East, in particular China. Not surprisingly then, The Silk Road has become a metaphor for cultural exchange between disparate and distant groups with China as a key destination and hub.

Nowhere is the radical consequence of this interchange more evident than in ceramic production. High fired porcelain, first transported from China to Europe as ballast for less weighty cargo, soon became the focus of a thriving export trade that, from the seventeenth century, impacted even the ancient city of Jingdezhen, a ceramic centre for some 1,000 years, which had flourished under the patronage of successive Imperial households. In the West, the extraordinary value placed on porcelain saw an unprecedented commitment of resources in a competitive quest to discover the secrets of the 'miraculous' translucent material. By the early eighteenth century, porcelain was known as white gold, the quest for its formula displaced the alchemic endeavour, and nation states were bankrupted in its pursuit.

In 2008, many centuries after camels plied Silk Road tracks, the first direct freight train sped from Beijing to Hamburg via the ancient overland route through Mongolia and Belarus, reducing current sea freight delivery times by a massive twenty-two days. Intriguingly, the maiden journey delivered Silk Road staples of textiles and porcelain.

Again, in the twenty-first century, the international repercussions from Chinese developments in ceramic production are striking and affect not only the commercial arena, but also individual practice in fine art and ceramic design. *Another Silk Road* engages the metaphor of The Silk Road in considering the role and impact of cultural exchange between diverse individuals, with China as the shared axis and ceramics as a common language. Each of the participating ceramic artists has a connection to China and some to Jingdezhen in particular.

For **Jackson Li**, the association with Jingdezhen is fundamental. The rejuvenation of the city, his hometown, has come at a cost to its traditional architecture and dense laneway settlements. As suburban sites are cleared to make way for high-rise dwellings, Li seeks to rescue carved timber facades, even entire buildings, which he reconstructs as artist accommodation at his rural workshop in San Bao, several kilometres from the city. Li's 'Post Imperial Porcelain' objects echo the subtle glazes of the Sung

period and the motifs of Ming blue-and-white ware produced in the Imperial workshops of Jingdezhen centuries earlier. Here too, he seeks to preserve the past by refashioning it in the present. The ornate flourishes of Ming brushwork are pared back to a subtle intimation of auspicious natural elements: the spare, repeated silver coil evokes a traditional wave motif and its association via water with purity, while the restrained outline of petals recalls the blossom motif with its reference to spring and regeneration.

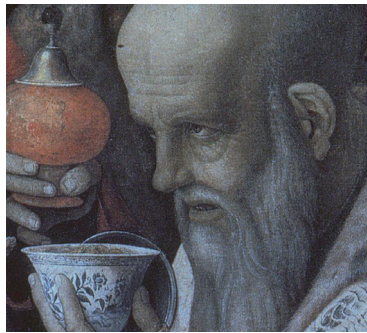


Image: Mantegna, *The Adoration of the Magi* (detail), c. 1490

The haunting translucency of Li's porcelain objects brings to mind Ming exemplars appearing in fifteenth century European religious paintings (such as Mantegna's *The Adoration of the Magi*, c.1490), the mysterious vessels believed to have magical properties consistent with the sacred offerings they contained.

Canadian **Paul Mathieu** is a regular traveller to Jingdezhen, often working from The Pottery Workshop, a residency founded by Caroline Chen and hosted by Takeshi Yasuda, both ceramic artists of international stature. As a writer

and commentator, Mathieu has long argued the specificity and independence of ceramics as an art form. In the 'Binary Bowl' series, oppositional or binary gestures are enacted in underscoring his thesis: an appropriated traditional Jingdezhen figurative mould has been impressed with a layer of clay and through this action a form with a concave space is produced. The resulting object is thus defined as a 'bowl'. A negative form is made from the first by imprinting clay within its interior space resulting in a pair of objects that, irrespective of their orientation, always display a concave space and are therefore understood as containers. The associated binary oppositions such as form/surface, image/object are, he asserts, particular characteristics of ceramics as an autonomous and singular art form.

It is not surprising that Mathieu, with his ongoing focus on the idiosyncratic practice of ceramics has developed a rare understanding of the history of Jingdezhen porcelain and has been assiduous in seeking out individuals with expertise in niche areas of the city's ceramic production. Unlike many recent Western visitors (and their seventeenth century merchant counterparts) seeking local expertise to produce objects to a pre-determined brief developed with a home audience and market in mind, Mathieu's work often evolves from sustained collaboration with Jingdezhen specialists. Seeking to develop an object where the aesthetic decisions were made by others, Mathieu relinquished all decisions on pattern and colour to the Chinese experts who painted the rich enamel surfaces of his 'Binary Bowl' pairs. Ironically, most of these patterns had been developed centuries earlier for a Western market and the palette is described in Chinese as 'foreign colours' due to its origin in early European exemplars brought to China by Jesuit priests.¹ In another of the significant reversals that define the

series, the binary questions inscribed in Chinese on each bowl were painted by the artist, despite his unfamiliarity with calligraphic letterforms.

Of course, I do not speak, read or write Chinese but it was important to use Chinese, not only because the work was made in China and is informed, stylistically, by Chinese ceramics, but also so that it cannot be read readily and remains obscure, ambiguous, possibly invisible.ⁱⁱ

Ambiguity is a term that peppers **Laurens Tan's** discussion of current work. Born in Australia, English



Image: Laurens Tans, *Monkey Train*, 1987

speaking, but recently resident in Beijing, Tan finds that the challenge of language, and the politics of identity are a daily reality despite his Chinese ancestry. Following his first visit to China in 1987, Tan produced a number of terracotta pieces that deploy figures from popular fables atop various forms of bucolic local transport (*Monkey Train*, 1987, for example).

By 1989, these vehicle forms had morphed to large composite constructions, part rural contraption, part Mad Max (*The Three Graces; Agrarian Love*). Now resident in China for extended periods, his new work embraces the dilemmas of cultural displacement, a perspective that allows Tan to observe and report with the acuity of a recent arrival. The animated video *The Depth of Ease*, 2007, extends the metaphor of the vehicle and introduces the three wheeled 'sanluche', "a home-made people carrier, illegal and unsafe"ⁱⁱⁱ but for Tan, a nostalgic remnant of improvisational ingenuity in a frugal community increasingly defined by the language of global design and the Faustian bargain of enhanced material options exchanged for loss of local forms and regional culture.

Julie Bartholomew's view of Western culture and its impacts in China is somewhat more ambivalent. During residency periods in China, Bartholomew has traced the advance of global brand marketing and the dissemination of its seductive message in the hushed, climate-controlled pavilions of designer boutiques and superstores. On the street, however, she points to the subversion of Western models through the "deliberate and playful misuse of global language [and] brand logos"^{iv} and the enduring co-existence of traditional cultural forms alongside contemporary alternatives, despite the pressures of precipitous modernisation. *Vuitton Dynasty*, 2008, and *Qing Prada*, 2008, take the form of women's accessories, a reference to the body as a locus for expressions of cultural change. *Vuitton Dynasty*, cast from Chinese copies of latest-release European designer goods, is over stamped with digital decal

images of women drawn from Sung Dynasty paintings, while *Qing Prada* is modelled on traditional objects in a museum setting, the clay artefacts carved with the designer logo and wrapped in the lushness of an Imperial Jingdezhen glaze.

While Bartholomew is optimistic about the capacity for China to maintain cultural autonomy, Taiwanese artist **Ching-Yuan Chang** argues for artistic forms uncoupled from the security of traditional models and mainland authority. Chang's ceramic work refers to the location — and dislocation — of Taiwanese cultural identity. His recent juror's report for the 2008 Taiwan Ceramics Biennale speaks of Taiwanese self awareness, asserting that the country "has pulled away from its supposed destiny as an 'extension' of the culture of the Central Plains of China".^v Chang exhorts Taiwanese artists to re-negotiate a relationship with their own culture and abandon the comfort of resisting change. *Mislocated Matrix*, 2009, is an expression of these values and his call for self reflection; a reference to the inner ego as a source and motivation for creativity, independent from the matrix of a hegemonic culture.

A re-evaluation of this order, triggered by extended separation from her home country, lies at the heart of **Ying-Yueh Chuang's** recent practice. Now resident in Canada, Chuang speaks of the legacy she has abandoned since leaving her native Taiwan and that which she has preserved. She identifies this personal recalibration in a Western setting as a form of conscientious selection not dissimilar from the strategy of natural adaptation in the biological world. Chuang, an inveterate collector of the botanical and marine forms she finds in her new environment, brings to these objects both forensic observation and an exuberant imagination to invent colourful hybrid confections that speak as much of her relationship to dual cultures as they do to her fascination with the natural order.

It is said that the Jesuit missionary Matteo Ricci, on reaching Peking in 1601, asked for directions to Cathay, the extravagant land of European fables. Like many others who followed over the centuries, Ricci's expectations were built on tales of a bountiful landscape, fauna of extraordinary variety and a people who emerged from delicate pavilions to enjoy leisured pursuits in a perpetual spring garden — an image that was little modified more than two centuries later in the Willow Pattern of eighteenth-century England. **Wenmin Li**, arriving in Australia from China in 2001 and anticipating a highly sophisticated urban environment, found a similar disjunction between supposition and reality. For Li, the distance between her homeland and her expectations of Sydney provoked a reassessment of the traditional values of her birthplace. Li's tessellated drawings are deeply personal: they are an account of the scope and detail of her daily life and the excavation of a new definition of self in a disrupted environment. Like the 'chinoiserie' tile constructions of seventeenth-century Europe, the works casually juxtapose objects from both Eastern and Western contexts to produce a singular domestic landscape. Defined by the series title 'Reaching Likeness through Unlikeness' they convey not only the resolution of a relationship between East and West, but the painter approaching her narrative drawings through the unfamiliar medium of ceramics.

Douglas Cham's experience of displacement in the Australian setting is the catalyst for his 'Banana Kids' series. The title invokes the barbed description "yellow on the outside, white on the inside" applied by first generation immigrants to Australian-born Chinese deemed to embrace Western cultural forms at the expense of traditional values. Cham's grouping of twelve native Australian animals, configured as oversized chopstick holders, are assembled in three discrete families, each member ascribed a range of personal qualities developed from Cham's sardonic assessment of Australian stereotypes fused with Chinese beliefs about particular animal types. Originally exhibited as a vast table setting conforming to the protocols of a traditional Chinese restaurant, the work for *Another Silk Road* includes a selection of the chopstick holders and documentary video footage referring to inter-ethnic tension in Australia that parodies the more banal loops screening in local restaurants across the country.

Guang Hui Chen is a ceramic artist and educator, part of the bustling contemporary arts environment of Shanghai. Chen's recent work invokes the form of the chair. Looming oversized thrones, frequently installed as a single element in cavernous architectural settings, they are dramatic, arresting, yet somehow intimate. For Chen, the allure of the chair is personalised: "like meeting a stranger who you feel you've met before".^{vi} And meeting strangers is particularly important to Chen who has forged a reputation for generating lively collaborative projects that routinely draw Western artists to Shanghai. His '2010 China-China' program, comprising exhibitions and a documentary film, underscores the slippage between the English word for his country of origin and the generic term for the porcelain it has provided to an enthusiastic Western market over four centuries.

The artists of *Another Silk Road*, like those of the 'China-China' project, debate the realities of cultural affiliation, displacement and exchange in a world that has shifted from "a time when the journey between continents, between cultures, was ... arduous and undertaken by few"^{vii} to a period of proximity and accelerated interchange. It is, however, a world in which The Silk Road metaphor retains its potency as definitions of East and West resist the impact of global commerce and refuse to blur.

Jacqueline Clayton

i Liz Magor, "Making China in China", <http://paulmathieu.ca> [accessed 28 May, 2009].

ii Paul Mathieu, email to Jacqueline Clayton, 2 June, 2009.

iii Laurens Tan, email to Jacqueline Clayton, 25 May, 2009.

iv Julie Bartholomew, *Zhongjian: Midway*, exhibition catalogue, Wollongong City Gallery, Wollongong, 2008, p. 102.

v http://www.ceramics.tpc.gov.tw/biennale2008/en/essay01_04.html [accessed 6 February, 2009].

vi *Guang Hui Chen*, exhibition catalogue, twocities gallery, Shanghai, 2008.

vii Guang Hui Chen, '2010 China-China', project statement, p. 1.



JACKSON LI, *CLASSIC CUPS (2)*, 2008, WHEEL THROWN PORCELAIN, GREEN CELADON GLAZE, COBALT PIGMENT, PLATINUM OVERGLAZE, 9 CM HIGH, 9 CM DIAMETER



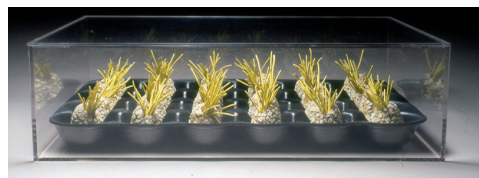
CHING-YUAN CHANG, *MISLOCATED MATRIX*, 2009, STONEWARE AND METAL, 20 x 60 x 40 CM



GUANG HUI CHEN, *RIGHT HERE RIGHT NOW*, 2007, STONEWARE, 155 X 55 X 55 CM



PAUL MATHIEU, *BINARY BOWLS (BOY WITH CAP)*, 2004, [CHINESE TEXT: WHAT IS APPROPRIATE? WHAT IS INAPPROPRIATE? WHAT IS INSIDE? WHAT IS OUTSIDE?], CAST PORCELAIN, ONGLAZE ENAMELS, 10 CM HIGH, 22.5 CM DIAMETER; 10 CM HIGH, 21 CM DIAMETER



YING-YUEH CHUANG, *TO BE...#1*, 2002, MULTIPLE GLAZE-FIRED PORCELAIN PAPER CLAY, 14 X 35 X 50 CM
PHOTOGRAPH: YING-YUEH CHUANG



LAURENS TAN, *THE DEPTH OF EASE* 极度悠闲, 2007, 3D ANIMATED VIDEO, 3 MINUTES 19 SECONDS DURATION



JULIE BARTHOLOMEW, *QING PRADA*, 2008, MIRROR, QI SHOES, POUCH AND FAN GLAZED PORCELAIN, LIFE-SIZE
PHOTOGRAPH: JULIE BARTHOLOMEW



WENMIN LI, *BIRD AND CACTUS*, FROM THE 'REACHING LIKENESS THROUGH UNLIKENESS' SERIES, 2009, EARTHENWARE, UNDERGLAZE
COLOUR AND CERAMIC PENCIL, EACH COMPONENT 15 x 15 CM PHOTOGRAPH: WENMIN LI

LIST OF WORKS



DOUGLAS CHAM, *LOSER*, FROM 'BANANA-KIDS' SERIES, 2008-9, POLISHED EARTHENWARE, UNDERGLAZE AND OVERGLAZE COLOUR, 11 X 38 X 26 CM PHOTOGRAPH: DOUGLAS CHAM

Jackson Li

Classic Cups (2) 2008
wheel thrown porcelain,
green celadon glaze, cobalt
pigment, platinum overglaze
9 cm high, 9 cm diameter

Bowl; Pink-Silver Lustre 2008
wheel thrown porcelain,
platinum overglaze
9 cm high, 19 cm diameter

Bowl with Wave Pattern 2008
wheel thrown porcelain,
platinum overglaze
5.5 cm high, 11 cm diameter

Bowl with Wave Pattern 2008
wheel thrown porcelain,
platinum overglaze
9.5 cm high, 18.5 cm diameter

Ching-Yuan Chang

Mislocated Matrix 2009
stoneware and metal
20 x 60 x 40 cm

Guang Hui Chen

Screening of images showing:

Right Here Right Now 2007
stoneware
155 x 55 x 55 cm

Dancing 2006
stoneware
83 x 42 x 37 cm

Holding China 2007
porcelain and glass
165 x 85 x 85 cm

Evidence of Carnival 2008
stoneware
150 x 65 x 65 cm

The Holy Building We Made
2008
stoneware
65 x 50 x 50 cm

Paul Mathieu

Binary Bowls (Little Girl) 2004
[Chinese text: What is
Beauty? What is Ugliness?
What is Excess? What is
Restraint?]
cast porcelain, onglaze
enamels
10 cm high, 24 cm diameter
10 cm high, 20 cm diameter

Binary Bowls (Boy with Cap)
2004
[Chinese text: What is
Appropriate? What is
Inappropriate? What is
Inside? What is Outside?]
cast porcelain, onglaze
enamels
10 cm high, 22.5 cm
diameter
10 cm high, 21 cm diameter

Ying-Yueh Chuang

To be...#1 2002
multiple glaze-fired
porcelain paper clay
14 x 35 x 50 cm

To be...#2 2002
multiple glaze-fired
porcelain paper clay
14 x 35 x 50 cm

To be...#3 2002
multiple glaze-fired
porcelain paper clay
14 x 35 x 50 cm

Laurens Tan

The Depth of Ease
极度悠闲 2007
3D animated video
3 minutes 19 seconds
duration

The Depth of Ease: Dan Sheng
极度悠闲: 诞生 2007
3D modelled photomedia:
C-print mounted on

aluminium under perspex
100 x 42.5 cm

*The Depth of Ease 2 极度悠闲
#2* 2007
3D modelled photomedia:
C-print mounted on
aluminium under perspex
90 x 73 cm

DaCaiLou 大菜楼 2007
3D modelled photomedia:
C-print mounted on
aluminium under perspex
90 x 67.5 cm

Banana Split 分香蕉 2007
3D modelled photomedia:
C-print mounted on
aluminium under perspex
96 x 76 cm

Beng Beng S, Red 2007
(6 of 8)
fibreglass, wood, plastic
18 x 13 x 26 cm

*Trash Collector 2/ Logic-
Intuition* 2007
converted toy, Beijing dirt
15 x 12 x 28 cm

*Banana Split (Rollercoaster) 2/
分香蕉 (过山车) 2* 2008
fibreglass, wood, plastic
15 x 9 x 25 cm

Julie Bartholomew

Qing Prada 2008
mirror, Qi shoes, pouch and
fan
glazed porcelain
life-size

Vuitton Dynasty 2008
cast porcelain and
photographic decals
life size

Wenmin Li

Window with View, from 'Reaching Likeness Through Unlikeness' series, 2009 earthenware, underglaze colour and ceramic pencil 60 x 30 cm

Niu Nian Da Ji, from 'Reaching Likeness Through Unlikeness' series, 2009 earthenware, underglaze colour and ceramic pencil 15 x 75 cm

Late Autumn in 2009, from 'Reaching Likeness Through Unlikeness' series, 2009 earthenware, underglaze colour and ceramic pencil 30 x 45 cm

Blue Rainy Winter, from 'Reaching Likeness Through Unlikeness' series, 2009 earthenware, underglaze colour and ceramic pencil 30 x 30 cm

Bird and Cactus, from 'Reaching Likeness Through Unlikeness' series, 2009 earthenware, underglaze colour and ceramic pencil 15 x 15 cm

Black Studio, from 'Reaching Likeness Through Unlikeness' series, 2009 earthenware, underglaze colour and ceramic pencil 15 x 15 cm

Purple I, from 'Reaching Likeness Through Unlikeness' series, 2009 earthenware, underglaze colour and ceramic pencil 15 x 15 cm

Purple II, from 'Reaching Likeness Through Unlikeness' series, 2009 earthenware, underglaze

colour and ceramic pencil 15 x 15 cm

Purple III, from 'Reaching Likeness Through Unlikeness' series, 2009 earthenware, underglaze colour and ceramic pencil 15 x 15 cm

The First Rain in Winter 2009, from 'Reaching Likeness Through Unlikeness' series, 2009 earthenware, underglaze colour and ceramic pencil 30 x 30 cm

Such a Rainy Winter, from 'Reaching Likeness Through Unlikeness' series, 2009 earthenware, underglaze colour and ceramic pencil 15 x 15 cm

Window, from 'Reaching Likeness Through Unlikeness' series, 2009 earthenware, underglaze colour and ceramic pencil 15 x 15 cm

Growth, from 'Reaching Likeness Through Unlikeness' series, 2009h earthenware, underglaze colour and ceramic pencil 15 x 15 cm

Douglas Cham

Loser, from 'Banana-kids' series, 2008–9 polished earthenware, underglaze and overglaze colour 11 x 26 x 38 cm

Bossy, from 'Banana-kids' series, 2008–9 polished earthenware, underglaze and overglaze colour 12 x 35 x 36 cm

Godfather, from 'Banana-kids' series, 2008–9 polished earthenware, underglaze and overglaze colour 12 x 23 x 36 cm

Boozer, from 'Banana-kids' series, 2008–9 polished earthenware, underglaze and overglaze colour 12 x 30 x 37 cm

Sleeper, from 'Banana-kids' series, 2008–9 polished earthenware, underglaze and overglaze colour 20 x 25 x 30 cm

Joker, from 'Banana-kids' series, 2008–9 polished earthenware, underglaze and overglaze colour 12 x 22 x 38 cm

Footy-fan, from 'Banana-kids' series, 2008–9 polished earthenware, underglaze and overglaze colour 12 x 30 x 35 cm

Footballer, from 'Banana-kids' series, 2008–9 polished earthenware, underglaze and overglaze colour 17 x 28 x 38 cm

Welcome, from 'Banana-kids' series, 2008–9 polished earthenware, underglaze and overglaze colour 20 x 30 x 35 cm

ACKNOWLEDGEMENTS

Sincere thanks to the nine artists who have worked so generously to produce *Another Silk Road* and to Julie Bartholomew who was central in shaping the exhibition; the magnificent staff of Ivan Dougherty Gallery, in particular Nick Waterlow, Margaret Farmer, Adrian Davies, Will Sturrock and Rachael Samuels; colleagues on the organising committee of The Australian Ceramics Triennale 09, particularly Merran Esson and Karen Weiss, a key contributor in securing funding for the proposal; Jo Bosben, Tracey Clement and Sara Spence from the Marketing Office at COFA; Liz Williamson, Head of School Design Studies, COFA for her ongoing support of the project and Paul Davis whose assistance in so many forms was critical to its realisation.

Many thanks to Chelsea Horvath and twocities gallery, Shanghai for providing the work of Jackson Li. Ying-Yueh Chuang acknowledges the Toronto Arts Council.

Another Silk Road and The Australian Ceramics Triennale 09 is supported by The Department of the Arts, Sports and Recreation.

IVAN DOUGHERTY GALLERY | COLLEGE OF FINE ARTS | THE UNIVERSITY OF NEW SOUTH WALES
SELWYN ST PADDINGTON NSW 2021 AUSTRALIA **OPEN MONDAY TO SATURDAY 10AM - 5PM CLOSED SUNDAYS & PUBLIC HOLIDAYS**

PHONE +61 29385 0726 **FAX** +61 2 9385 0603 **EMAIL** ldg@unsw.edu.au **WEB** www.cofa.unsw.edu.au/galleries/ldg

ISBN: 978-0-7334-2781-7



UNSW
THE UNIVERSITY OF NEW SOUTH WALES