



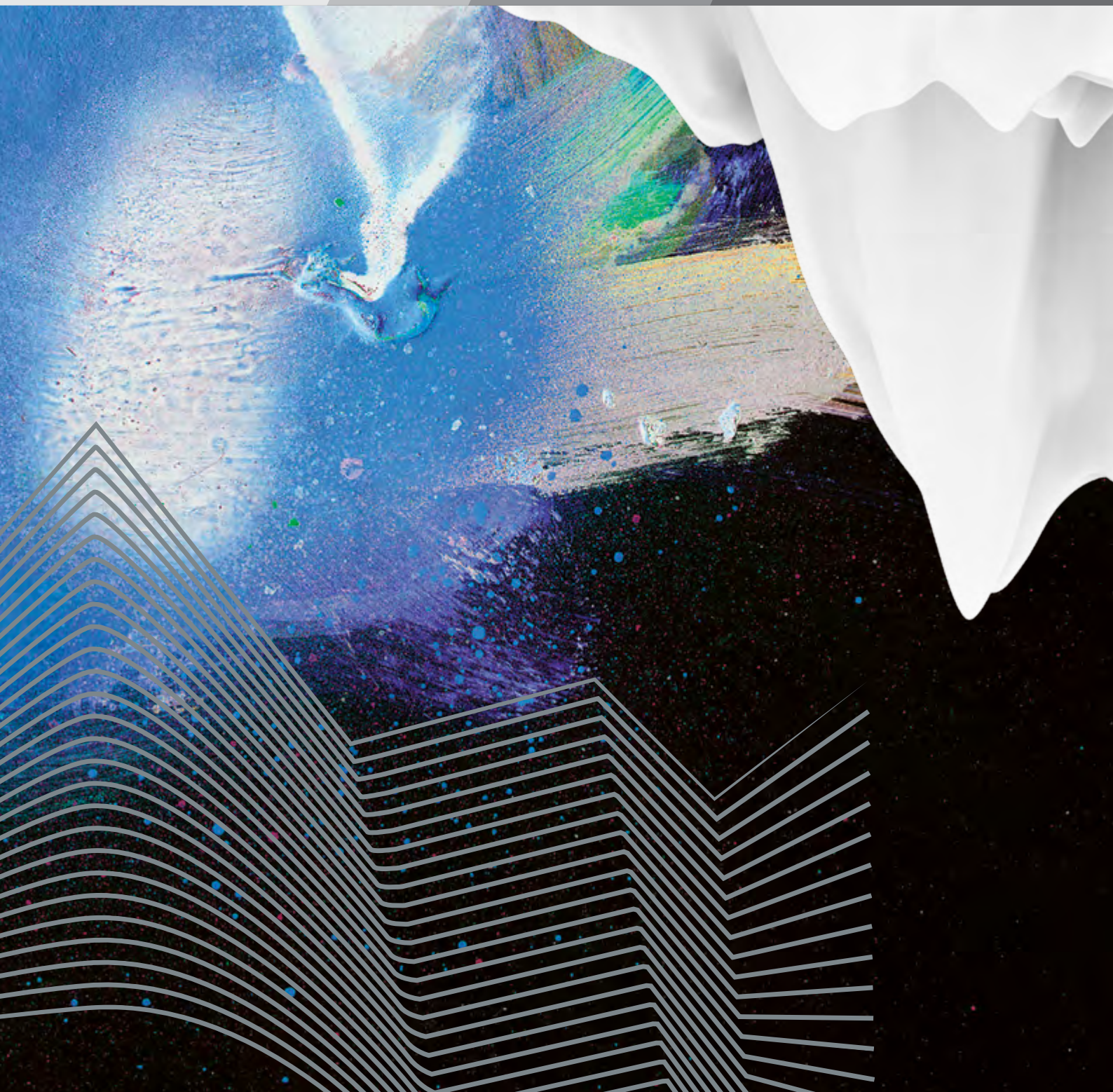
Art & Design Open Day 2015

5 September

Never Stand Still

Art & Design

Paddington & Kensington





Your creative
journey
begins here

#thecreativecampus

Photo: Brett Boardman

Welcome to UNSW Art & Design

Visit our purpose-built creative Paddington campus to discover how UNSW Art & Design can support you to realise your artistic and professional potential.

Tour open studios, enjoy a range of inspiring exhibitions, cutting-edge design showcases and media screenings. Hear from current students, learn about our internationally recognised degree programs and the supportive and innovative learning and teaching environment we foster.

Meet our dedicated staff including leading designers, media creators and renowned artists. Explore our unmatched range of fine art studios, design labs, media production facilities, galleries and exhibition spaces.

We offer intensive hands-on creative studio practice, more than 200 international exchange opportunities, hundreds of professional work experience internships and industry connections that will see you develop your creative imagination and critical thinking, build your portfolio and launch your creative career.

Drop in and say hi to our team on Kensington campus on Open Day for more degree, course and career information, or to see more exciting student art and design work before or after your visit to our Paddington campus.

Grab Bag

Pick up a Grab Bag on Open Day, including a custom-designed notebook, pencil and sticker artwork.



Photo: Brett Boardman

Social It And Win

Win a 3D Printing Pen, a Lomokino Camera or a Portable Turntable!

Simply follow us on Instagram [@artdesignunsw](https://www.instagram.com/artdesignunsw) and hashtag your photos [#thecreativecampus](https://www.instagram.com/hashtag/thecreativecampus)

We will feature the best images on our Instagram feed.

Plan your day

1.
Visit degree
information
booths

3.
Explore
the
campus

5.
Interact with
cutting-edge
exhibitions

2.
Attend the
creative career
lectures

4.
Discover
open
studios



Photo: Brett Boardman

Degree Information

For detailed information and guidance about our degree programs, visit our degree information booths. Take the opportunity to meet our dedicated staff, including leading artists and designers.

- Fine Art
- Design
- Digital Media
- Art Theory
- Admissions

Find out about dual degree options or talk to our knowledgeable staff about our postgraduate programs.

We offer an innovative, supportive and challenging learning and teaching environment to reflect the best contemporary thinking and practice, extensive industry engagement and leading edge research.

📍 Paddington Campus Courtyard,
Student Learning Commons (see map I9)

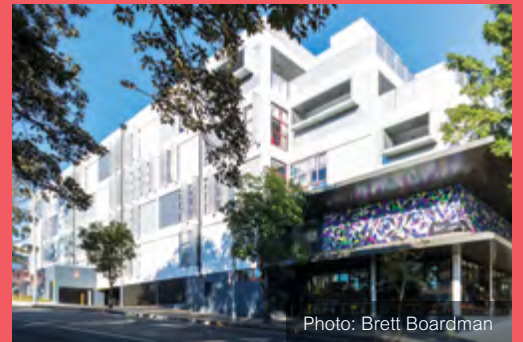


Photo: Brett Boardman

Campus Tours

Join a tour of our dynamic creative Paddington campus.

Running throughout the day each tour will include visits to our studios, facilities, galleries and exhibition spaces. In addition to course information and studio areas, learn about our resource centre and tool rooms offering thousands of items of equipment, they are dedicated to supporting you to make your art and create your design and media work.

🕒 All Day
📍 Paddington Campus Courtyard (see map M16)

Creative Degree and Career Lectures



Professor Ross Harley, Dean, UNSW Art & Design

Paddington Campus

Creative Degrees: Art, Design & Media Showcase presented by Dean, Professor Ross Harley

Meet Professor Harley, leading international artist and educator, as he explores the transformative power of creativity through outstanding examples of A&D student art, media and design work. Ask Prof Harley questions and learn about how design, media and contemporary art contribute to the creative and cultural economy and are the growth industries of the future.

- 🕒 1:00pm – 2:00pm
- 📍 Main Lecture Theatre EG02, Paddington Campus (see map Q8)

Creative Careers in Art & Design presented by Assoc. Dean International, Dr Vaughan Rees

Join artist and designer Dr Rees as he outlines the national and international pathways and opportunities for creative and innovative careers in design, media and contemporary art practice. Find out about the ways in which art and design graduates are forging careers in the creative industries and ask Dr Rees about how you can build your own creative career in the dynamic global economy.

- 🕒 10:30am – 11:30am
- 📍 Main Lecture Theatre EG02, Paddington Campus (see map Q8)

Kensington Campus

Creative Degrees: Art, Design & Media Showcase presented by Dean, Professor Ross Harley

- 🕒 9:30 – 10:30am
- 📍 Lecture Theatre CLB 8 [E19], Kensington Campus

Creative Careers in Art & Design presented by Associate Dean International, Dr Vaughan Rees

- 🕒 1:30pm – 2:30pm
- 📍 Lecture Theatre CLB 8 [E19], Kensington Campus



Maria Smit *Hairy Hairy Quite Contrary*

Portfolio Entry Workshops

Get confident about your portfolio. Join a portfolio entry workshop to learn about how to prepare and develop your portfolio. Meet our assessment staff who will provide you with personal feedback, guide you through how to produce the best possible portfolio and offer step-by-step advice about how to submit.

- 🕒 9:30-10:30am & 11:30am – 12:30pm
- 📍 D109, Paddington Campus (see map U4)
- 🕒 11:30am-12:30pm & 2:30pm – 3:30pm
- 📍 Hong Kong Alumni Room, Lower Ground Floor, Scientia Building, North Wing, Kensington Campus

Art, Design and Media Studios & Demonstrations



Art Studios



Painting Studio

- 🕒 Open All Day
- 📍 F201, 2nd Floor F Block, Paddington Campus (see map E3)



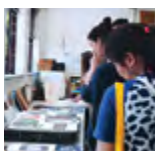
Drawing Studio

- 🕒 Open All Day
- 📍 F201, 2nd Floor F Block, Paddington Campus (see map E3)



Printmaking Studios

- 🕒 Open All Day
- 📍 1st Floor G Block, Paddington Campus (see map K4)



Print Making Sale

- 🕒 Open All Day
- 📍 Ground Floor G Block, Paddington Campus (see map K7)



Sculpture, Installation, Performance Studio

- 🕒 Open All Day
- 📍 F123, 1st Floor F Block, Paddington Campus (see map G6)



Photography Studio

- 🕒 Open All Day
- 📍 F204, 2nd Floor F Block, Paddington Campus (see map G2)

Design Studios



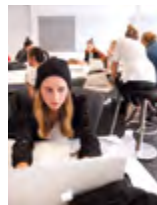
Object Design Studio

- 🕒 Open All Day
- 📍 F115, 1st Floor F Block, Paddington Campus (see map G5)



Spatial Design Studio

- 🕒 Open All Day
- 📍 F122, 1st Floor F Block, Paddington Campus (see map I6)



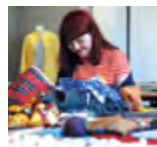
Visual Communications and Graphics Studio

- 🕒 Open All Day
- 📍 Graphic Design Studio F114, 1st Floor F Block, Paddington Campus (see map F6)



Ceramics Studio

- 🕒 Open All Day
- 📍 Basement E Block, Paddington Campus (see map Q11)



Textiles Studio

- 🕒 Open All Day
- 📍 F102, 1st Floor F Block, Paddington Campus (see map E6)

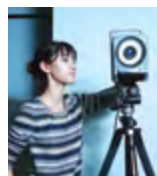


Jewellery Studio

- 🕒 Open All Day
- 📍 F117, 1st Floor F Block, Paddington Campus (see map H5)

Technology Lab Demos

Using technology to produce your work makes innovation and ideas that were once impossible become a reality.



Motion Capture Lab

- 🕒 Open All Day
- 📍 Black Box D106, 1st Floor D Block, Paddington Campus (see map U2)



Makerspace – 3D Fabrication Lab

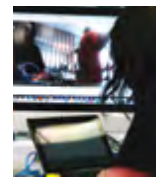
- 🕒 Open All Day
- 📍 Ground Floor D Block off the Central Courtyard, Paddington Campus (see map T7)

Digital Media and Production Facilities



Animation

- 🕒 Open All Day
- 📍 Computer Lab (D104), 1st Floor D Block, Paddington Campus (see map T3)



Film & Video

- 🕒 Open All Day
- 📍 DBQ8, Basement D Block, Paddington Campus (see map U10)



Interactive and Cross Media

- 🕒 Open All Day
- 📍 F122, 1st Floor F Block, Paddington Campus (see map I6)



Sound Studio

- 🕒 Open All Day
- 📍 DBQ7 and DB13, Basement D Block, Paddington Campus (see map T11)

Technical Support and Resource Centres

Check out our technical and resource centres which offer thousands of tools, media technology equipment and resources for loan to students. These centres enable students to produce outstanding design, media and art works, to acquire and build their applied skill sets, capacity for critical thinking and making skills.



Resource Centre – Show & Tell

- 🕒 Open All Day
- 📍 DB01, Basement D Block, Paddington Campus (see map S10)



Toolroom – Show & Tell

- 🕒 Open All Day
- 📍 FG04, Ground Floor F Block, Paddington Campus (see map E9)

Photos: Brett Boardman, Britta Campion, George Popov



Photo: Alex Davies

Art Theory Speed Dating

Dr Uros Cvoro invites you to describe unfamiliar images to complete strangers and think about art as a shared experience in this unique session.

- 🕒 12:00pm
- 📍 D111, 1st Floor D Block, Paddington Campus (see map T4)

iCinema Amnesia Atlas

The Amnesia Atlas project brings together artists, neuroscientists and computer scientists to explore the question of how a photographic media interface might function as a memory prosthesis. It investigates the relationship between space, time and memory, using immersive 3D visualisation.

- 🕒 All day
- 📍 A Block, Paddington Campus (see map Q15)

Robotics Lab

The National Creative Robotics Lab (CRL) explores interaction between human and robotic agents. See robotic systems at work, rest and play, and how the Lab is at the cutting edge in the development of original, ground-breaking technologies and interface designs.

- 🕒 All day
- 📍 GG05, Ground Floor G Block, Paddington Campus (see map K7)

Interactive iCinema Lab Tours

The iCinema is an interdisciplinary arts, engineering, science and social science Centre. Visit the iCinema lab and tour our immersive and interactive visualisation systems.

- 🕒 All day
- 📍 Lower Ground Floor, Scientia Building, South Wing, Kensington Campus

Student Showreel

Our Media Arts program offers you hands-on experiences across a range of key media and audio-visual production areas including animation, VFX, interactive and cross media production and publication.

Come and see our student showreel to experience some of the best screen based works including animations and short films by students past and present.

- 🕒 9:00am – 10:30am;
11:30am – 1:00pm;
2:00pm – 4:00pm
- 📍 Main Lecture Theatre EG02, Paddington Campus (see map Q8)



Live Performance by Rochelle Haley in the UNSW Galleries
Photo: Alex Davies

3D Virtual Reality Headset Experience

Dr John McGhee will be demonstrating his virtual reality (VR) research work in UNSW Galleries. This work focuses on immersing users in actual clinical stroke data and is a direct visualisation of 3D clinical Magnetic Resonance Imaging (MRI) and Computed Tomography (CT) data. The intention of the piece is to build an immersive VR experience that might help to reconnect this separation of body and mind.

- 🕒 All day
- 📍 UNSW Galleries, F Block, Paddington Campus (see map G10)



Photo: Britta Campion

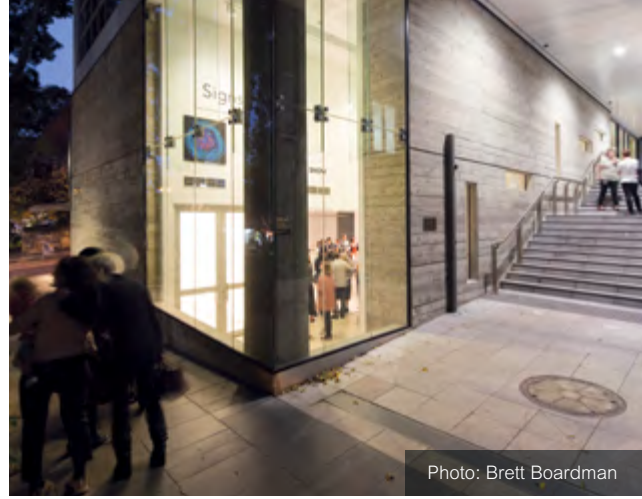


Photo: Brett Boardman

Art, Design and Media exhibitions on campus

UNSW Galleries

Join our Galleries curatorial staff on tours of our new season of exhibitions.

People Like Us explores the interrelationship between art, technology and the human experience.

The *John Fries Award* presents new and experimental works from emerging Australian and New Zealand artists. Since the awards and associated exhibition were established in 2010, it has become a platform and launching pad for early career visual artists.

The Streets of Papunya is the most ambitious showcase of artists from this famed Western Desert arts centre to be presented in Sydney this decade.

Galleries tours will leave on the hour every hour.

- 📍 F Block, Paddington Campus (see map G10)

ADspace

Visit ADspace to see how UNSW Art & Design students plan to change the world.

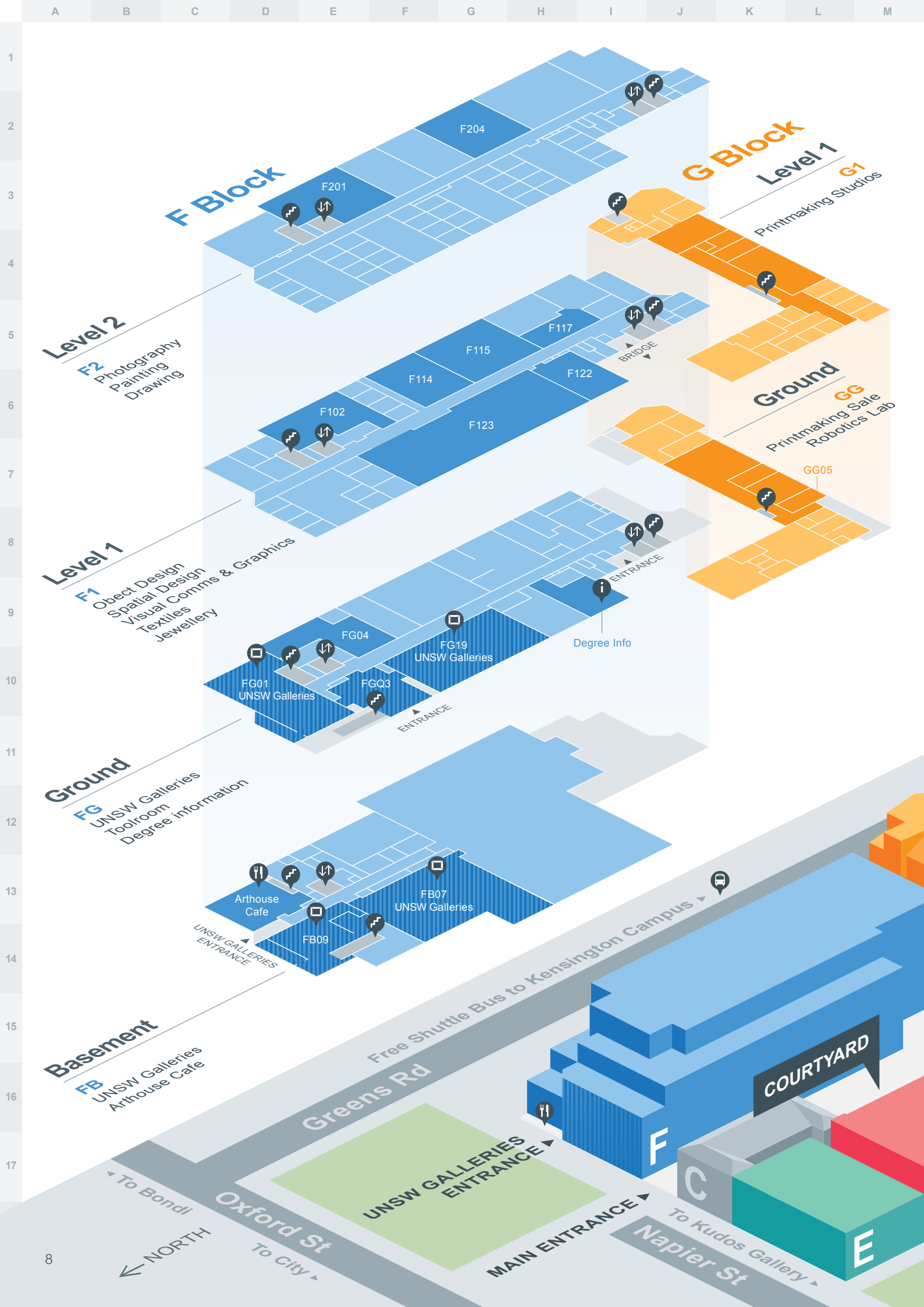
The *Design for Social Impact* exhibition is focused on designs that explore a range of design topics including: poverty alleviation, material science to combat waste, built environment for disadvantaged youth, education in the developing world and more.

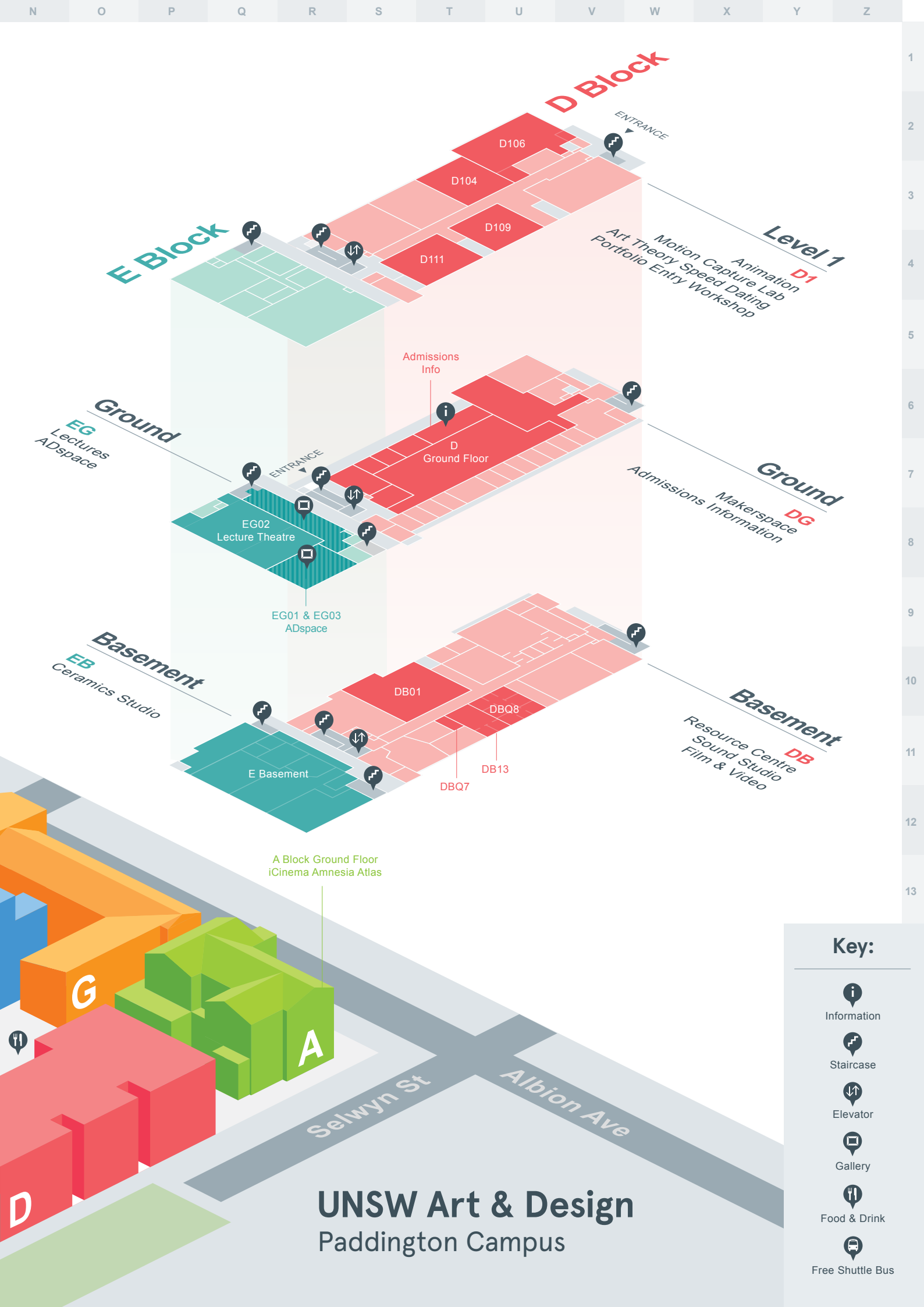
- 📍 Ground floor E Block, Paddington Campus (see map R8)

Kudos Gallery

Kudos Gallery is a student-run exhibition space. Stop by to experience Giselle Stanborough's STANBOT, which explores the idea of technopoly, and what it means to be a human in a time when the cognitive and evaluative biases of computer technology dominate all spheres of life.

- 📍 6 Napier Street, Paddington (100 metres from campus)





Key:







-  Information
-  Staircase
-  Elevator
-  Gallery
-  Food & Drink
-  Free Shuttle Bus



Photo: Brett Boardman

How to Apply

Whether you're a school leaver or a mature age student looking for a new career path, UNSW Art & Design welcomes you to apply for admission to one of our internationally recognised Undergraduate degrees.

All domestic applicants (Australian and New Zealand citizens or permanent residents) and International students who are completing an Australian Year 12 or IB qualification apply online through the Universities Admissions Centre (UAC) www.uac.edu.au

International applicants (who are not completing an Australian or IB qualification) apply online through apply.unsw.edu.au

Portfolio Entry

UNSW Art & Design is all about great art, design and ideas. Submitting a portfolio can boost your chances of admission to Australia's leading faculty of art and design. Join one of our Open Day Portfolio Workshops or visit artdesign.unsw.edu.au/portfolio-entry for further information.

Guaranteed Entry

Offers to UNSW are made based on your selection rank – which is your ATAR plus any eligible bonus points. With the introduction of Guaranteed Entry, UNSW provides clarity by publishing the Guaranteed Selection Rank that assures your entry to UNSW in a particular degree.

There is no application for Guaranteed Entry – all you need to do is apply via the Universities Admission Centre (UAC) for a degree at UNSW.

To receive a Guaranteed Entry offer to UNSW, you must:

1. Have a rank (ATAR + bonus points) at or above the Guaranteed Selection Rank published in this document.
2. Have the degree listed as one of your UAC preferences for the 2016 UAC Main Round.
3. Ensure that the UNSW degree of your choice is your highest eligible preference.

For further information, see www.futurestudents.unsw.edu.au/guaranteed-entry





artdesign.unsw.edu.au

Contact us

Tel +61 (2) 8936 0684

Email artdesign@unsw.edu.au

UNSW Art & Design

Cnr Oxford St & Greens Rd
Paddington NSW 2021


Join our *MAKE* Newsletter

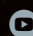
Join our *MAKE* newsletter for the chance to win prizes and receive the latest news on our degrees, upcoming exhibitions, events and activities happening both on campus and across our creative community.


Subscribe to *MAKE* at
artdesign.unsw.edu.au/subscribe-make

Connect with us

Tag [#thecreativecampus](https://twitter.com/thecreativecampus)
or [@artdesignunsw](https://twitter.com/artdesignunsw)

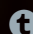
 [artdesignunsw](https://www.facebook.com/artdesignunsw)

 [artdesignunsw](https://www.youtube.com/artdesignunsw)

 [artdesignunsw](https://www.instagram.com/artdesignunsw)

 [artdesignunsw](https://twitter.com/artdesignunsw)

 [pinterest.com/artdesignunsw](https://www.pinterest.com/artdesignunsw)

 artdesignunsw.tumblr.com

CRICOS Provider Code **00098G**