

**A Silver
Lining**

&

**A New
Beginning**

**A Silver
Lining**

**A New
Beginning**

FOREWORD

A Silver Lining and A New Beginning

Ken Reinhard, Dean of the School of Art within Alexander Mackie College of Advanced Education, initiated Ivan Dougherty Gallery at the Cumberland Street premises in The Rocks in 1977, when it was opened on 24 October by Sir Hermann Black, Chancellor of the University of Sydney. The inaugural exhibition by Elwyn Lynn, curator of Sydney University's Power Collection, presaged a remarkable variety of national and international, College, Faculty and independently curated exhibitions, that quickly established the gallery as a force to be reckoned with. The move to Paddington saw the gallery re-opened on 16 June 1981 by renowned film maker Bruce Beresford, housed in a heritage building designed by the government architect Vernon at the end of the nineteenth century, who also designed the Art Gallery of NSW. The College of Fine Arts library was installed in the building as well, which had been used as a school for the bulk of its life, and where various ex-pupils over the years have visited their former classrooms, that produced luminaries such as Clive James and Jon Konrads amongst many others.

Today, the library, bursting at the seams, needs to occupy the entire Vernon building, and Ivan Dougherty Gallery, irrespective of the proposed development, requires a new, larger and more flexible space to do full justice to the infinite range of art practiced today.

A Silver Lining is the celebration of the Gallery's first 25 years, during which it has been guided by six directors, in chronological order, Chris Gentle, Stan de Teliga, Maggie Gilchrist, Ian Howard, Louise Pether and Nick Waterlow. Each has brought a particular vision to the gallery, whilst maintaining essential links with the staff and students of the College, and as it became in 1990, a Faculty within the University of NSW. Over 1,000 artists from every part of Australia and many countries around the world have shown their work at Ivan Dougherty Gallery. The exhibitions have embraced every medium imaginable, and have addressed countless themes, and many previously unasked questions. The curatorial programme has benefited hugely over the years by the presence on staff of Belinda Webb, now curator of the University of NSW Art Collection, Beverley Fielder, who also runs the COFA Exhibition and Performance Space, Felicity Fenner, additionally an art writer for a variety of publications, and Rilka Oakley, also a practicing artist who worked previously with the Biennale of Sydney; the Gallery's front desk has been admirably handled by Yvonne Donaldson for many a moon.

The Gallery's purpose has always been that of an educational and professional resource for the staff and students, as well as being an independently minded operation that produces a broad range of exhibitions of stature that address issues and brings together work that

others do not. Its audience therefore ranges from the University to the local community, to the national and the international. In addition to each year showing the work of artists from different parts of the world, affiliation with large events such as the Biennale of Sydney, Perspecta, Olympic Games, Mardi Gras and ISIS-Symmetry (art and science) Congress, have extended audiences. The Gallery has also initiated a number of significant touring exhibitions since its inception, generally nationally but on occasions internationally, and accompanies each exhibition with a catalogue appropriate to the subject. Talks by artists and curators form part of each project's public programmes, and a fully fledged forum often lends further dissemination to Faculty, students and the general public.

Direct links to the School of Art History and Theory extend from Nick Waterlow and Felicity Fenner teaching within the Master of Art Administration, to the employment of these students as interns, and their involvement for work experience or as volunteers.

A New Beginning is an exhibition of works for auction, generously sponsored by Christie's Australia, the proceeds of which will go directly to the development of the proposed University Art Museum. All the works have been most generously donated by a large selection of artists who have exhibited at Ivan Dougherty Gallery over its 25 year history, from 1977 to 2002. We would like to thank them and their galleries for such overwhelming support. The proposed new building, designed by Cracknell and Lonergan Architects and scheduled to begin early in 2004, will also house a gallery for undergraduate and post-graduate exhibitions, and one that can be utilised for special exhibitions, including of the University Art Collection, and by other UNSW Faculties.

This Art Museum is a long overdue project for Sydney, which currently lags behind Melbourne and Brisbane in the provision of new, independent art galleries for the exhibition of Australian and international art, design and related disciplines. The facility will strengthen Sydney's reputation as a leading centre of contemporary art, providing the capacity for a high profile, dynamic calendar of exhibitions, public programmes and publications.

Ian Howard
Dean, College of Fine Arts

Nick Waterlow
Director, Ivan Dougherty Gallery
Senior Lecturer, School of Art History & Theory

A SILVER LINING & A NEW BEGINNING

A fundraising exhibition of works for auction and silent auction
towards a new University Art Museum

EXHIBITION Ivan Dougherty Gallery, 14-30 November 2002

SILENT AUCTION 14 November – 30 November

SPECIAL AUCTION VIEWING Thursday 28 November, 5.30 – 7.30 pm

AUCTION Monday 2 December, 6 pm for 6.30 pm
Supported by Christie's Australia

VENUE COFA Lecture Theatre, UNSW College of Fine Arts
Selwyn Street, Paddington
(adjacent to Ivan Dougherty Gallery)

Buyers are able to leave written bids beforehand
A Christie's representative will bid on your behalf

There will be no Buyer's Premium charged at this auction

All lots (auction and silent auction) are subject to 10% GST

Please note that artists and/or their representatives
have fully donated works to this auction. Donors are eligible
for a tax deduction to the value of the sale; commercial
gallery or other commissions have been waived.

All sale proceeds will go directly towards the
construction of a new University Art Museum

CATALOGUE NOTE All measurements are in centimetres, height before width
(before depth, if applicable)
All works on paper are framed, unless otherwise specified

CATALOGUE OF WORKS



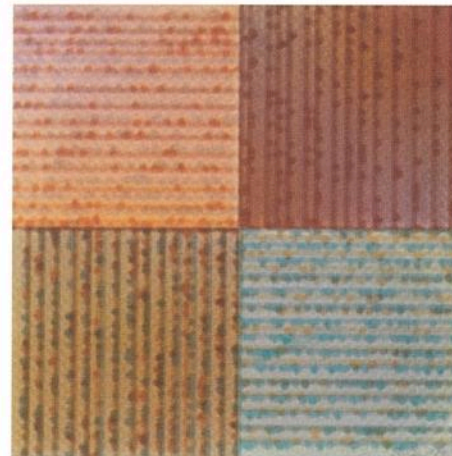
BRONWYN BANCROFT

b. 1958

Coming Home 1991
inscribed, signed and dated
below image
hand cut silkscreen print
no. 66 of 95
63 x 48 cm (image size)

(unframed)

Provenance
Collection the artist



GEORGE BARKER

b. 1942

Teevee Hummer 1999
signed 'Barker '99' lower right
screened acrylic on paper
52.5 x 52.5 cm

Provenance
Collection the artist

Exhibited
George Barker, Dots and Stripes -
New Screenprints, Watters Gallery,
Sydney, 1999

JENNY BELL

b. 1959

Bull no. 7 1994
charcoal on paper
60 x 86 cm

Provenance
the artist and Mori Gallery

Exhibited
Jersey Cow restaurant,
Sydney, 1997-2001



MARION BORGELT

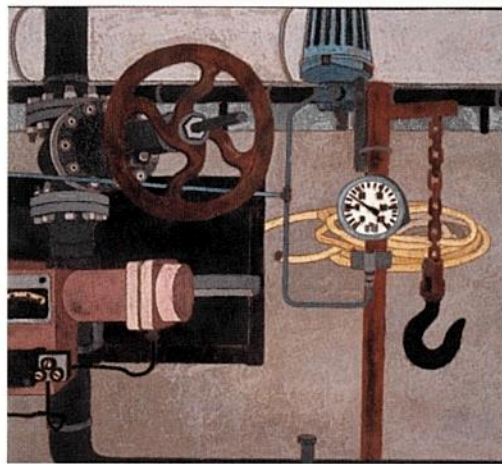
b. 1954

Bloodlight Stack: 52 Curls 2002
signed and detailed on reverse
hand made paper, perspex box,
pigment, acrylic, screws
68.5 x 59 x 15.5 cm

Provenance
the artist and Sherman Galleries

Exhibited
Marion Borgelt, Allegoria, Sherman
Galleries, Sydney, 2002





CRESSIDA CAMPBELL

b. 1960

Industrial Still Life 2001
signed 'CC' lower right;
signed on reverse
watercolour paint on wood
38 cm x 42 cm

Provenance
Collection the artist

Exhibited
Nevill Keating Pictures,
London, 2001



TOM CARMENT

b. 1954

Afternoon Surf, Waterman's Bay
(W.A.) 1999
signed 'T.C. '99' lower right
oil on Arches paper
55 x 75 cm

Provenance
Collection the artist

JUDY CASSAB

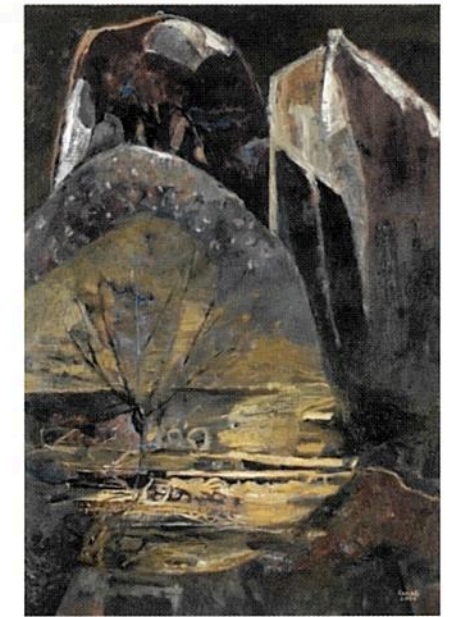
b. 1920

Sentinels, Girraween 2000
signed 'Cassab 2000' lower right
acrylic and oil on linen on wood
107 x 76 cm

Provenance
Artist's studio

Exhibited
Australian Galleries, Sydney, 2001;
Solander Galleries, Canberra, 2001

Literature
Sasha Grishin, *The Canberra Times*,
20/11/01, p.10



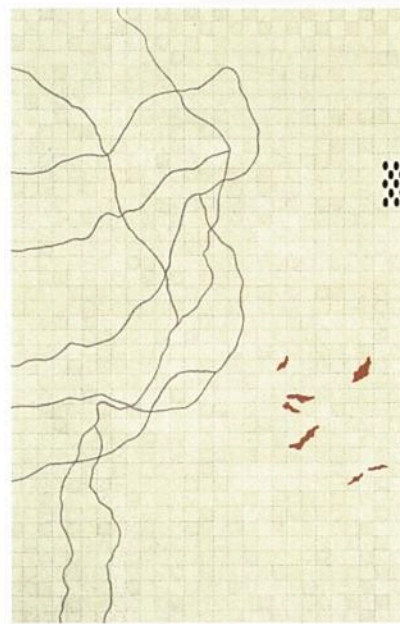
JON CATTAPAN

b. 1956

Funnel on Red (study) 2002
signed 'Cattapan 2002'
oil on linen
70 x 106 cm

Provenance
Collection the artist





ANDREW CHRISTOFIDES

b. 1946

Odyssey II 2001
signed and dated below image 'Aug. 2001'
ink, watercolour and acrylic on paper
84 x 56 cm

Provenance
Collection the artist

Exhibited
Andrew Christofides, Works on Paper, Charles
Nodrum Gallery, Melbourne, 2002

LIZ COATS

b. 1946

Cicada 1993
pigments and acrylic media on
Japanese kozo paper with
archival mount
30 x 24 cm (image size)

Provenance
the artist and Utopia Art, Sydney
(not illustrated)



JOHN COBURN

b. 1925

Study For Quartet 2002
signed 'Coburn' lower right
acrylic on paper
34 x 40 cm

Provenance
Artist's studio



OLIVE COTTON

b. 1911

Limited edition book, *Olive Cotton*,
published 2000, no. 15 of 150
Includes *The Patterned Road*, 1938, an
original photograph by Olive Cotton
printed to museum standard
signed on the artist's behalf by her
daughter, Sally McInerney
24 x 21.5 cm, 64pp

Provenance
Josef Lebovic, Josef Lebovic Gallery

This lot includes a photograph of
Olive Cotton by Sally McInerney
inscribed below image 'Olive Cotton
at "Spring Forest", Sept. '95'
signed 'S. McInerney '01' lower right
inscribed and signed on reverse
gelatin silver print
22.4 x 18.3 cm

Provenance
Sally McInerney
(unframed)

ADAM CULLEN

b. 1965

Australian Saint 20
(They are not coming) 1999
enamel on board
90 x 76 cm

Provenance
the artist and Yuill/Crowley





ELISABETH CUMMINGS

b. 1934

Kimberley Waterhole 2002
signed lower right and
on reverse
oil on canvas
51 x 56 cm

Provenance
the artist and King Street
Gallery on Burton

Exhibited
Elisabeth Cummings, *New Paintings*,
King Street Gallery on Burton,
Sydney, 2002

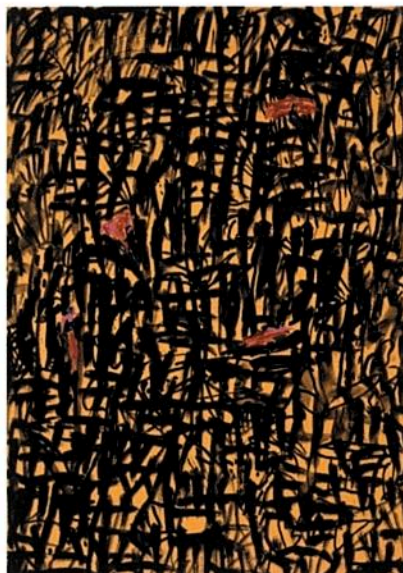


DENNIS DEL FAVERO

b. 1953

Estinto D2 2002
digital print
20 x 25 cm

Provenance
Collection the artist



KEN DONE

b. 1940

Parrots and Rainforest III 1995
signed 'Ken Done' lower right
gouache and oil crayon on paper
68.5 x 48.5 cm

Provenance
Collection the artist

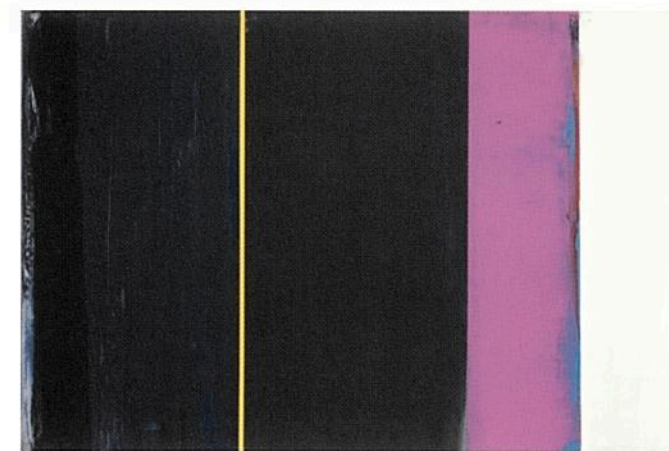
Exhibited
The Ken Done Gallery, Sydney, 1996
Executed as part of an art series for BMW
Australia on "Impressions of mobility"

RICHARD DUNN

b. 1944

Untitled (Westworld) 2002
acrylic on canvas
60 x 90 cms

Provenance
the artist and
Sherman Galleries



NICOLE ELLIS

b. 1951

Site Painting 1993
Signed: 'Nicole Ellis' reverse
acrylic paint skin mounted on
MDF board
64 cm diameter (tondo)

Provenance
Collection the artist

Exhibited
Arrested Sites, Hyde Park Barracks
Museum, Sydney, 1993;
*Circle, Line, Square: Aspects of
Geometry*, Campbelltown City Art
Gallery, 1994

Literature
Sioux Garside and Jenny Zimmer,
Circle, Line, Square
(exhibition catalogue)





FIONA FOLEY

b. 1964

Untitled 1 1998
charcoal, pastel and wax on paper
67 x 101 cm (paper size)

Provenance
the artist and Roslyn Oxley9 Gallery



CHRIS GENTLE

b. 1939

Garden Study - Hill End 2000
charcoal on paper
55 x 74 cms

Provenance
Collection the artist

Exhibited
Chris Gentle, Robin Gibson Gallery,
Sydney, 2000

PHIL GEORGE

b. 1954

Monsanto Rules 1997-98
gold pigment and mixed
media on Irish linen
90 x 70 cm

Provenance
Collection the artist

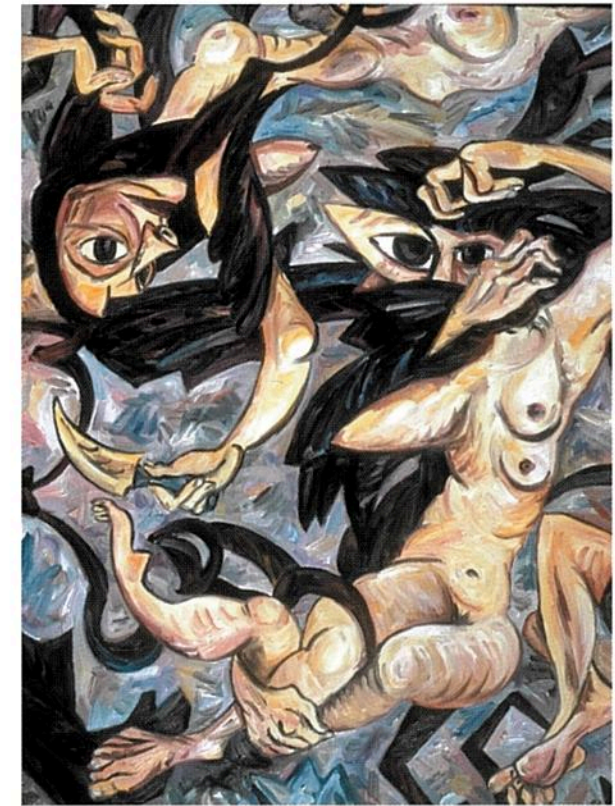


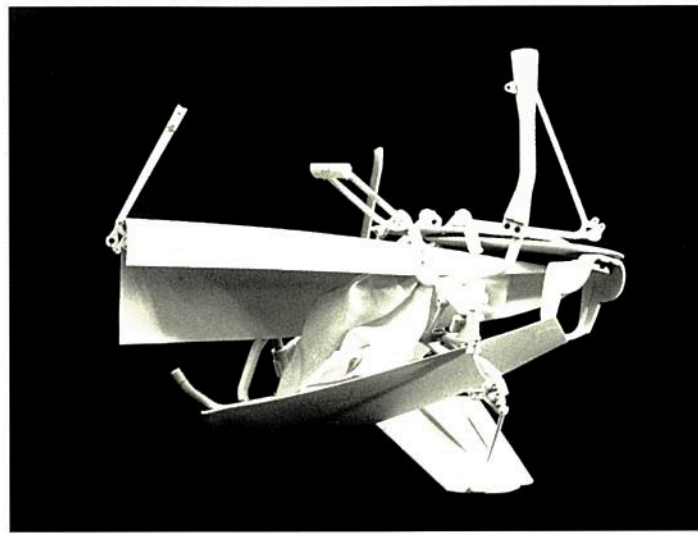
GEORGE GITTOES

b. 1949

Study for Dark Turban
(Afghanistan) 2002
oil on canvas
121 x 91 cm

Provenance
Collection the artist





RICHARD GOODWIN

b. 1953
Parasite Android Maquette 2002
 signed 'R.Goodwin '02' on work
 plastic, cloth, timber, perspex
 25 x 21 x 21 cm

Provenance
 Collection the artist



ROBYN GORDON

b. 1943
Marine Continuum 1995-96
 signed front and back
 bronze with chemical and
 enamel patinas
 52 x 62 x 10 cm

Provenance
 Collection the artist

Exhibited
 Crawford Gallery, Sydney 1996; Savode
 Gallery, Brisbane 1997; Sculpture by the
 Sea, Sydney, 1997

Literature
 Sue Melville & Julie Rollinson, *Robyn
 Gordon, Australian Art and Artists*, Science
 Press, 1996, p. 163

ANNE GRAHAM

b. 1949
Pull 2002
 garden rakes and rubber tube
 dimensions variable
 (approx. 100 x 100 cm)

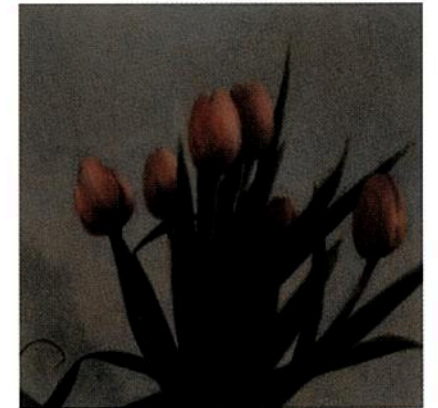
Provenance
 the artist and Sherman Galleries
 (not illustrated)

IAN GRANT

b. 1947
Tulips (Pink) 1998
 signed 'I.G. 98' lower right
 acrylic on linen
 46 x 46 cm

Provenance
 Collection the artist

Exhibited
 Flower, Crawford Gallery, Sydney, 1998

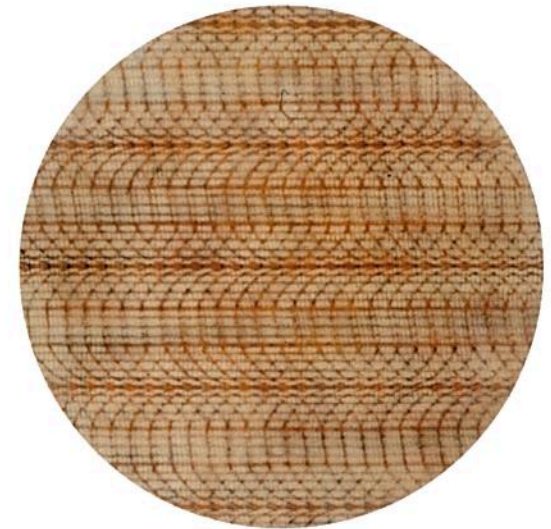


HELGA GROVES

b. 1961
Double Helix (yellow) 1998
 signed on reverse
 enamel paint, pigment medium
 and varnish on linen
 60 x 60 cm

Provenance
 the artist and Gitte Weise Gallery

Exhibited
 Galerie Baudoin Lebon, Paris 1998;
 Bellas Gallery, Brisbane, 1998





FIONA HALL

b. 1953
Untitled (from The price is right)
 1994
 Cyanotype
 43 x 38 cm (paper size)

Provenance
 the artist and Roslyn Oxley9 Gallery



GWYN HANSEN-PIGOTT

b. 1935
White teapot still life 2002
 Translucent porcelain (7 pieces)
 26 x 38 x 18 cm

Provenance
 the artist and Rex Irwin Art Dealer
 (note: illustration is a similar but not actual work)

BILL HENSON

b. 1955
Untitled (Kindertotenlieder)
 1976-98
 Type C colour photograph,
 edition of 10
 45 x 37 cm (paper size)

Provenance
 the artist and Roslyn Oxley9 Gallery
 (not illustrated)

PETER HILL

b. 1953
Plato's Cave 2002
 signed: 'Peter Hill'
 mixed media
 29.7 x 42.0 cm

Provenance
 Collection the artist

Exhibited
 2002 Biennale of
 Sydney (similar work in
 a different format, from
 the series *Museum of
 Contemporary Ideas*)



ROBERT HIRSCHMANN

b. 1968
Greta 2000
 signed and inscribed
 on reverse
 oil and pigment
 on linen
 71.5 x 71.5 cm

Provenance
 the artist and King
 Street Gallery
 on Burton





CHRISTOPHER HODGES

b. 1954

Cart 1994
signed reverse
acrylic on canvas
190 x 84 cm

Provenance
the artist and Utopia Art Sydney

FRANK HODGKINSON

1919-2001

Ochre Banksia 1997
signed 'Frank Hodgkinson '97'
lower right
pastel and charcoal on paper on
hessian and board
78 x 57 cm

Provenance
Estate of the artist



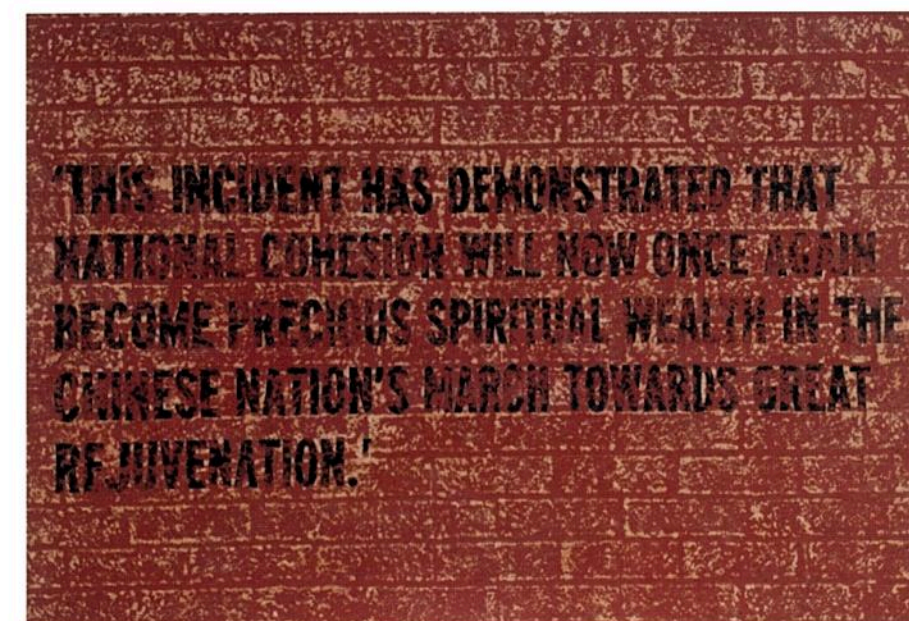
IAN HOWARD

b. 1947

Great Rejuvenation 2002
acrylic on canvas
121.5 x 179 cm

Provenance
the artist and Watters Gallery

Exhibited
Ian Howard and Xing Jun Qin,
A Bridge Too Far,
Watters Gallery, Sydney, 2002





TIM JOHNSON

b. 1947

Dalai Lama at Mori's 2002

acrylic on canvas
45 x 60 cm

Provenance
the artist and Mori Gallery



NOLA JONES

b. 1938

Florentine II 2000

signed 'Nola Jones'
wood pulp, oil paint,
acrylic paint, gold leaf
73 x 71 x 12 cm

Provenance
Collection the artist

ILDKO KOVACS

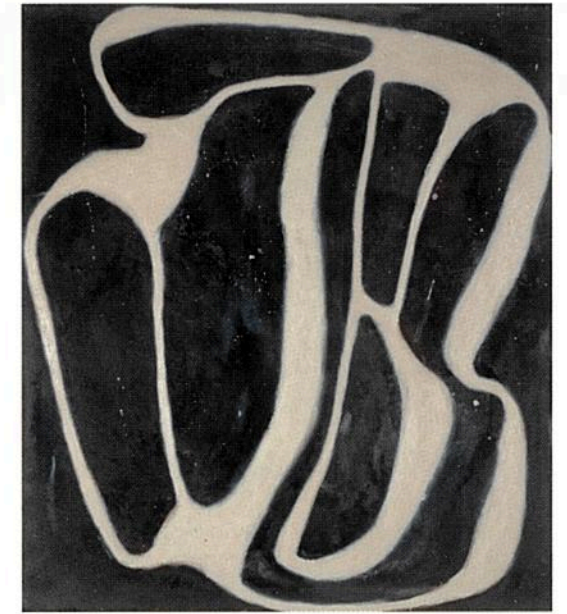
b. 1962

Marble 2000

oil on card, mounted on
canvas, mounted on ply,
signed on reverse
86 x 76 cm

Provenance
the artist and Martin Browne
Fine Art

Exhibited
Martin Browne Fine Art,
Sydney, 2000



GRAHAM KUO

b. 1949

Blinding Moon,

Starlit Sun #15 2000

signed in pencil,

lower left

oil and acrylic

on canvas

152 x 152 cm

Provenance
Collection the artist

Exhibited
Dickerson Gallery,
Melbourne, 2000





ROSEMARY LAING

b. 1959

groundspeed (Rose Petal) #16
2001

Photograph, no. 3 of 15
85 x 144 cm (image size)

Provenance

Collection Geoff Kleem

Exhibited

Rosemary Laing, *groundspeed*,
Gitte Weise Gallery, Sydney, 2001



COLIN LANCELEY

b. 1938

The Oracle 1973-1993

signed 'Lanceley' lower right
India ink, coloured pencil and
crayon on paper
91 x 69 cm (paper size)

Provenance

Lanceley Collection

Exhibited

Whitechapel Gallery, London, 1973;
Australian Galleries, Sydney, 1993



JANET LAURENCE

b. 1947

Periodic Table Series 1 – copper oxide 1993
signed lower right corner each work
copper oxide and oil on
Japanese mulberry paper
four panels, each 50 x 32 cm

Provenance

Collection the artist

Exhibited

Centre of Contemporary Art, Hamilton,
New Zealand, 1994

Literature

Terence Maloon (on *Periodic Tables* series),
Art & Australia, vol. 31, 1994



ALUN LEACH-JONES

b. 1937

His Masters Voice 1989

signed 'Alun Leach-Jones'
pastel on Stonehenge paper
52 x 38 cm

Provenance

Collection the artist

Exhibited

Alun Leach-Jones, Berkeley Square
Gallery, London, 2001

Literature

Alun Leach Jones – Drawings, UNSW
College of Fine Arts, 1998, p.44



LINDY LEE

b. 1954

Auspicious Beginning 2002
ink jet print, oil on board
two panels, each 41 x 28.5 cm

Provenance
Collection the artist



KERRIE LESTER

b. 1953

Heat 2001
signed lower right
oil on canvas hand stitched
by artist
84 x 101 cm

Provenance
Collection the artist

Exhibited
Kerrie Lester, *Portrait of An Audience*, Australian Galleries, Sydney, 2001

ELWYN LYNN

(1917-1997)

Planning 1981
signed and dated on reverse
'Elwyn Lynn, 26 April, 1981'
mixed media on canvas
76 x 76 cm

Provenance
Estate of Elwyn Lynn

Exhibited
Robin Gibson Gallery, Sydney, 1981;
Anne Bertouch Gallery,
Newcastle, 1984



EUAN MACLEOD

b. 1956

Little Garie from Above 2001
signed reverse
oil on canvas
56 x 152 cm

Provenance
Collection the artist

Exhibited
Garie Beach, Hazelhurst Gallery, 2001

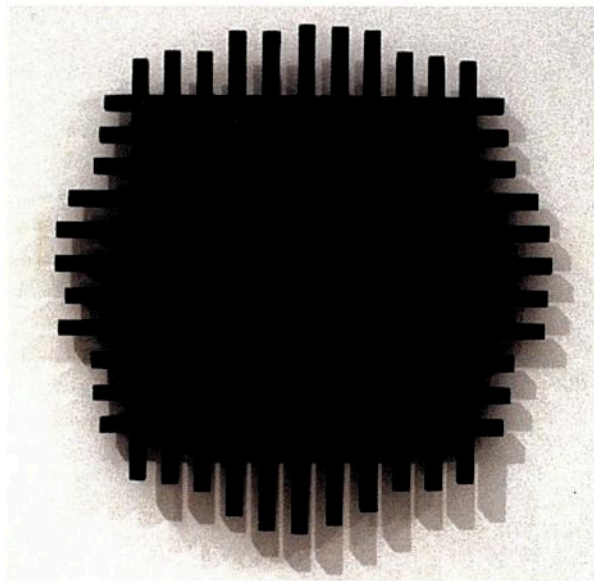


NOEL McKENNA

b. 1956

Circus Elephant (Tea) 1992
signed 'N. McKenna.92'
lower left
oil, enamel on canvas board
44 x 51.2 cm

Provenance
the artist and
Darren Knight Gallery



HILARIE MAIS

b. 1951

Nubes #5 2002
oil on wood
79 x 79 x 6 cm

Provenance
Collection the artist

(note: illustration is a similar
but not actual work)

TRACEY MOFFATT

b. 1960

Up in the Sky
(charity print) 1997
off set print,
edition no. 61 of 99
43 x 53 cm (image size)

(unframed)

Provenance
the artist and
Roslyn Oxley9 Gallery



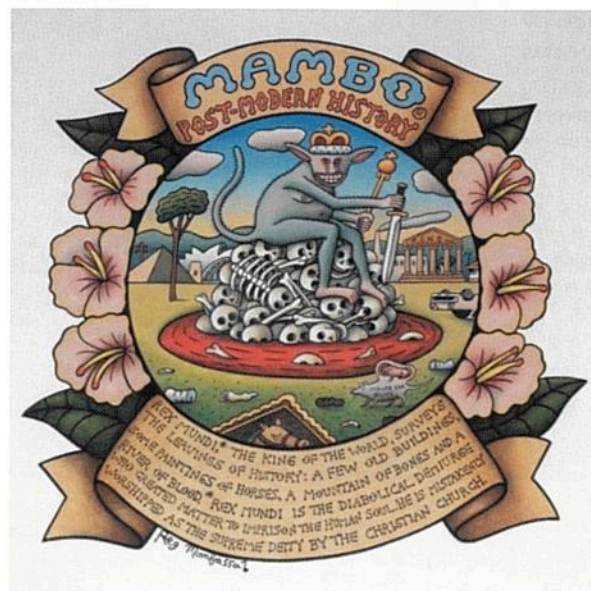
IDRIS MURPHY

b. 1949

Reflections on Reflection,
Hawkesbury 2000
signed lower right
mixed media on paper
25 x 35 cm

Provenance
the artist and King Street Gallery
on Burton





CHRIS O'DOHERTY
 (aka Reg Mombassa)
 b. 1951
Post Modern History 2000
 charcoal and coloured pencil
 signed 'Reg Mombassa'
 lower left
 47 x 43.5 cm

Provenance
 Collection the artist
 Original artwork for a
 Mambo T-shirt



TERENCE O'DONNELL
 b. 1942
Homestead Creek - Mutawintji
 1997
 signed lower right
 oil on board
 30.2 x 56.5 cm

Provenance
 Collection the artist

Exhibited
 Terence O'Donnell, On Site,
 Robin Gibson Gallery,
 Sydney, 2002

ALAN OLDFIELD

b. 1943
Dune, Ferrier's Creek 2000
 signed 'Oldfield '02'
 reverse
 oil, acrylic on canvas
 28.5 x 23 cm (image size)

Provenance
 Collection the artist

Exhibited
 Lizard Island and Points North,
 Robin Gibson Gallery, Sydney, 2001



MIKE PARR

b. 1945
Unrotted Names No.9 1998
 signed 'Mike Parr '98'
 lower right
 drypoint, hand colouring
 180 x 140 cm

(unframed)

Provenance
 the artist, Viridian Press and
 Sherman Galleries

Exhibited
 Sherman Galleries, Sydney, 1998



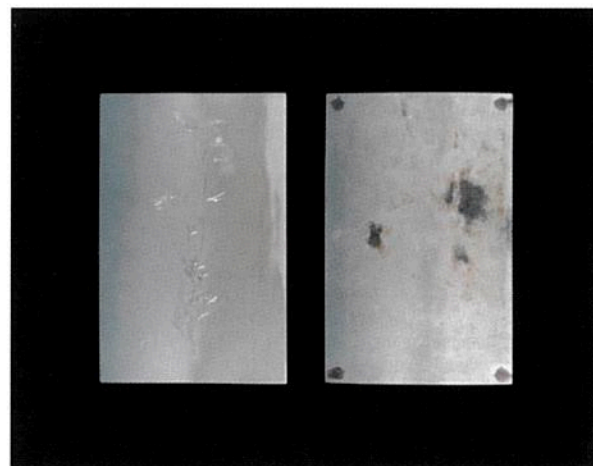


GLORIA PETYARRE

b. 1945

Awelye 1996
acrylic on canvas
148 x 87 cm

Provenance
the artist and Utopia Art Sydney



DEBRA PHILLIPS

b. 1958

Untitled (Actinotus Helianthi)
2001
From the series
52 sidelong glances
Type C photograph,
mounted on acrylic
75 x 95 cm

Provenance
Collection the artist

32

PETER PINSON

b. 1943

Green Shoalhaven Landscape
1995
signed 'Pinson' lower right
acrylic on watercolour
paper laid on canvas
76 x 106 cm

Provenance
Collection the artist

Exhibited
Peter Pinson, Paintings from
Riversdale, Woolloomooloo Gallery,
Sydney, 1995



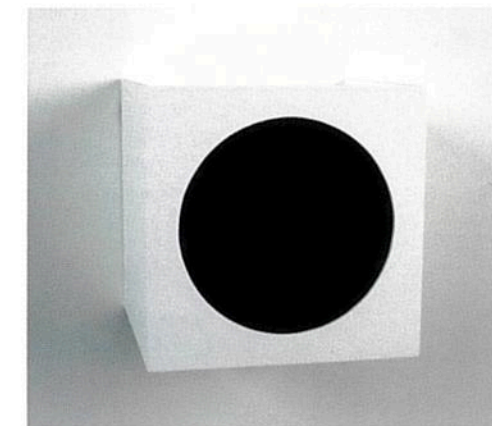
JACKY REDGATE

b. 1955

Untitled 1991
edition no. 10 of 10
paper, cardboard
27 x 27 x 27 cm

Provenance
Collection the artist

Exhibited
Looking at seeing and reading (curated by
Ian Burn), Ivan Dougherty Gallery, 1993



33



KEN REINHARD

b. 1935

Do You Want a Lift to the Beach?

1982

signed and dated verso

mixed media

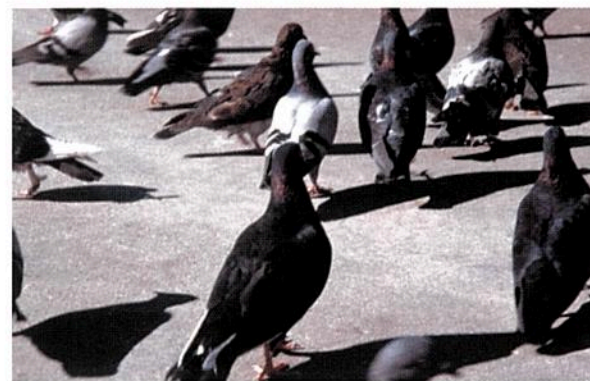
143.1 x 155.2 cm

Provenance

Collection the artist

Exhibited

Ivan Dougherty Gallery, Sydney, 1984



LYNNE ROBERTS-GOODWIN

b. 1958

Pigeons #18 (from Paris series)

1983-84

Type C photograph

64 x 100 cm

Provenance

Collection the artist

Exhibited

Paris Days, The UNSW Studio in Paris, Ivan Dougherty Gallery, Sydney 2002

SYLVIA ROSS

b. 1953

For Evil to Triumph 2a 1999

paper

two panels each 32 x 50 cm

(unframed size)

Provenance

Collection the artist

Exhibited

Shifting Currents, Ivan Dougherty Gallery, 1999; Context, Kudos Gallery, Sydney, 2001; Wattspace Gallery, Newcastle, 2001

(not illustrated)



JULIE RRAP

b. 1950

A-R-Mour (self portrait as Marilyn) 2000

signed reverse

photograph

190 x 120 cm

(unframed)

Provenance

Collection the artist

Exhibited

Roslyn Oxley Gallery, Sydney, 2000; Robert Lindsay Gallery, Melbourne, 2000; Centre for Contemporary Photography, Melbourne, 2002

Literature

Artlink, no. 22, 2002



NIKE SAVVAS

b. 1964

Over and Over 1999
acrylic on canvas
101 x 121 cm

Provenance
the artist and Roslyn Oxley9 Gallery



KURT SCHRANZER

b. 1965

Parrot Kite on a Clouded Day 1993
signed and inscribed reverse with title, date,
catalogue no. MCCXXIX
acrylic on panel
14 x 16.8 cm

Provenance
Collection the artist

Exhibited
Shoot, Gallery 483, Sydney, 1993; Heaven on A String,
Australian Catholic University, Canberra, 1996;
Japanese Gardens, Cowra, NSW and Stanthorpe
Regional Art Gallery QLD, 1997

GEORGE SCHWARZ

b. 1935

The Messengers 1994
signed on copperplates
C-print with skulls, glass, and
rattan under perspex
78.3 x 63.4 x 9 cm

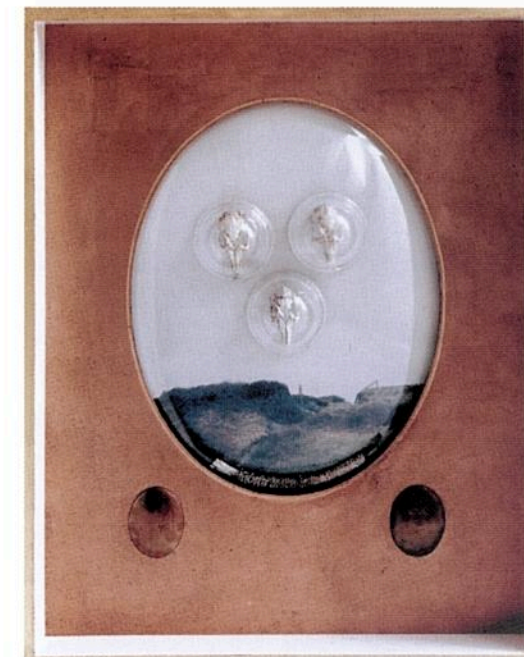
Provenance
Collection the artist

JAN SENBERGS

b. 1939

Utopia Waters 1992
pastel and acrylic wash on paper
67 x 87 cm

Provenance
Collection the artist
(not illustrated)



STELARC

b. 1946

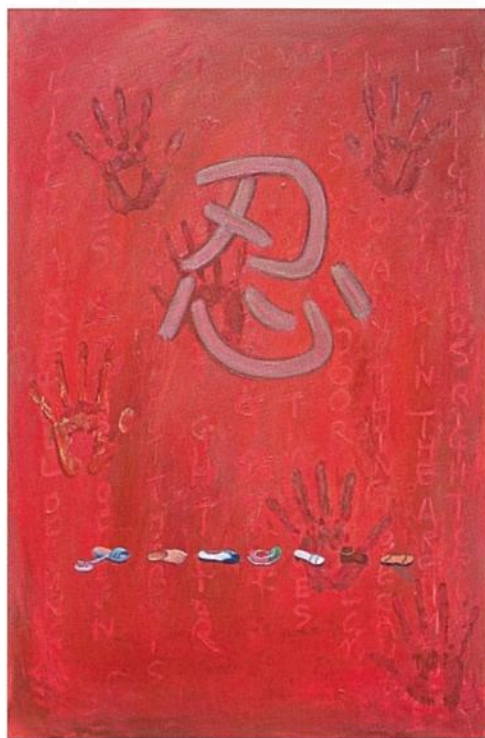
Event for Stretched Skin no. 4, Art
Academy, Munich, Germany, 8.8.77
photo intaglio on BFK Rives paper
(original photo by Harold Rumpf)
Published by Irving Galleries,
Sydney, 1991
Edition no. 7 of 25
signed lower right
61 x 46 cm (image size)

(unframed)

Provenance
Collection Nick Waterlow

Exhibited
Sherman Galleries, Sydney, 1991





MY LE THI

b. 1964

Tolerance 2001
acrylic on canvas
90 x 70 cm

Provenance
Collection the artist



ANN THOMSON

b. 1933

Aspect IV 2000
pigment, oil stick on canvas
56 x 53 cm

Provenance
Collection the artist

Exhibited
Wynne Prize, Art Gallery of NSW, 2001

IMANTS TILLERS

b. 1950

Diaspora 1997
etching, no. 4 of 14
39.5 x 39.5 cm

Provenance
the artist, Viridian Press and
Sherman Galleries



AIDA TOMESCU

b. 1955

Two works:
Cruce I, Cruce III 2002
(from the Cruce series)
each edition no. 2 of 15
aquatint and drypoint from steel
each 120 x 80 cm

Provenance
the artist and Viridian Press



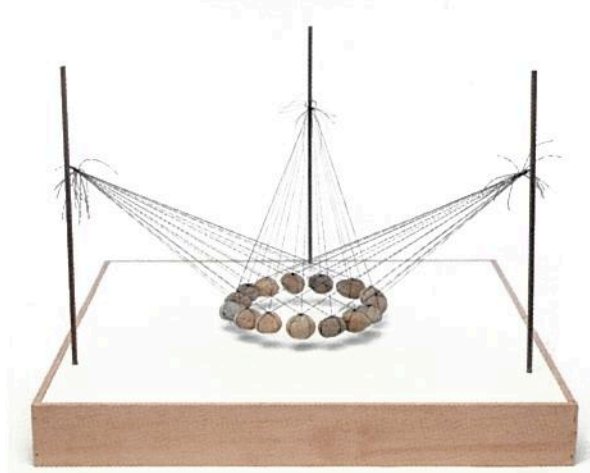


TONY TUCKSON

(1921–1973)

TD851 (abstract figurative with yellow) c.1951-56
gouache on paper
40.5 x 51 cm (irregular)

Provenance
Collection Margaret Tuckson



KEN UNSWORTH

b. 1931

Suspended Stone Circle 1978
mild steel rod, river pebbles,
black thread
52 x 52 x 38

Provenance
Collection the artist

Exhibited
full scale version in Art Gallery of
Western Australia, purchased 1983

ROSEMARY VICKERS

b. 1941

*Outside/Inside – Goldsworth
Letters Series no.3, 2000*
signed: 'R. Vickers'
solar plate etchings on paper
36 x 44 cm

Provenance
Collection the artist

Exhibited
Sydney Printmakers – Surface
Tension, Hazelhurst Regional Gallery,
2000; Histories in the Making, Ivan
Dougherty Gallery, Sydney, 2001



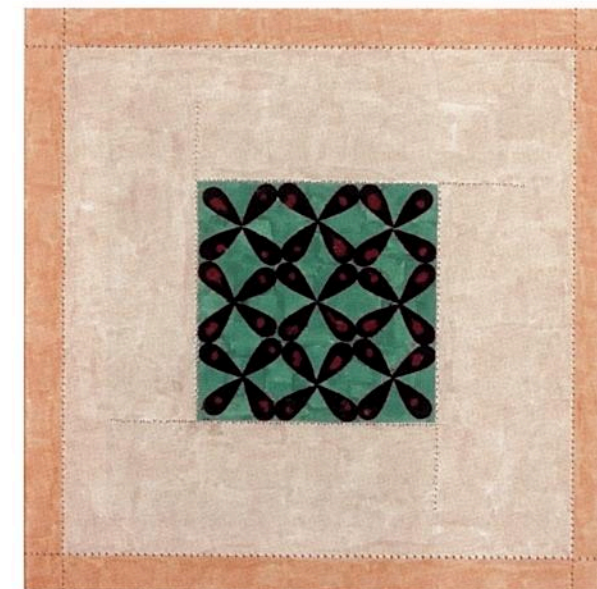
**SAVANHDARY
VONGPOOTHORN**

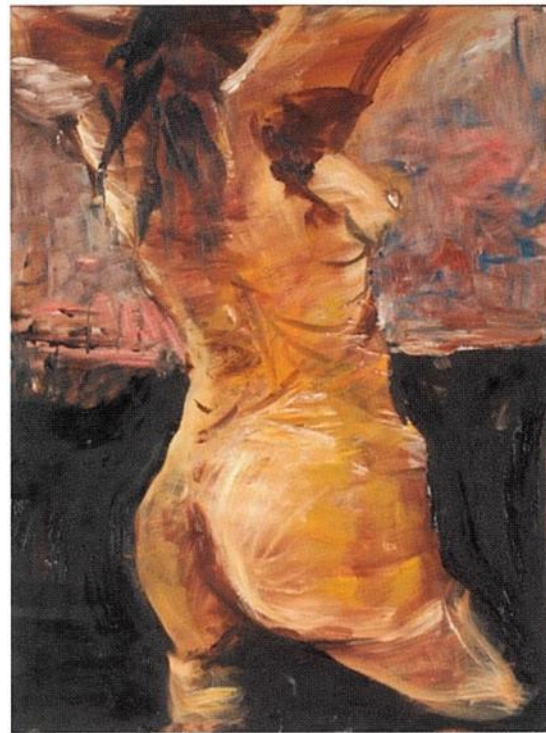
b. 1971

Highland Mandala VI 2001
mixed media on paper
19 x 19 cm

Provenance
Collection the artist

Exhibited
Savanhdary Vongpoothorn, bindi dot
tartan zen, Niagara Galleries,
Melbourne, 2002



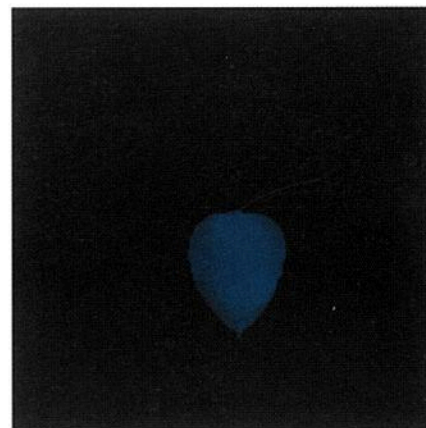


JOHN WALKER

b. 1957

Woman 1992
oil on board
80 x 60 cm

Provenance
the artist and Utopia Art Sydney



LACHLAN WARNER

b. 1961

Bodhi Leaf 2001
Signed 'LPW 11/01' reverse
Type C photograph on perspex
50 x 50 cm

Provenance
Collection the artist

Exhibited
Block Gallery, Sydney, 2001



GUY WARREN

b. 1921

Family
signed 'Guy Warren'
oil and acrylic on canvas
60.5 x 101.5 cm

Provenance
Collection the artist

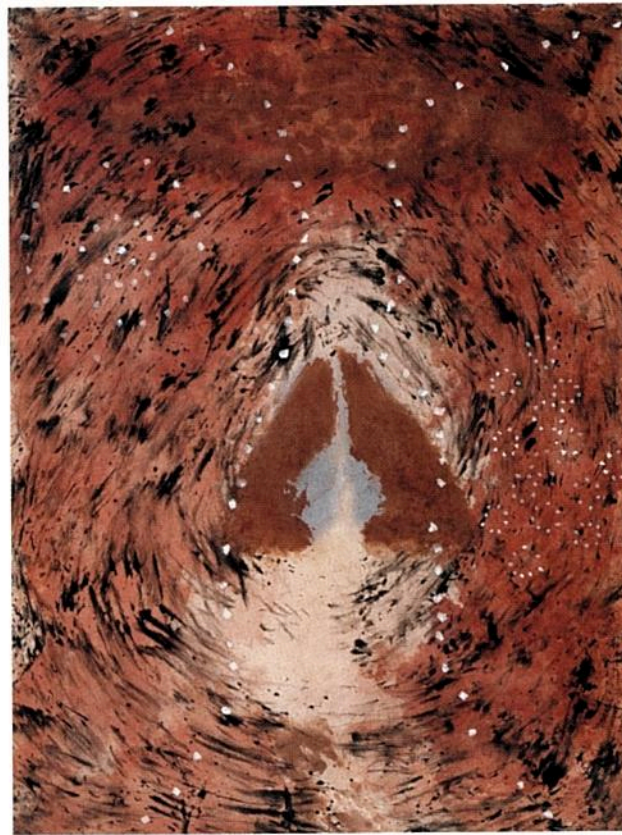
DICK WATKINS

b. 1937

Untitled 2001
signed 'RW 01' lower right
gouache on paper
70 x 50 cm

Provenance
Collection the artist





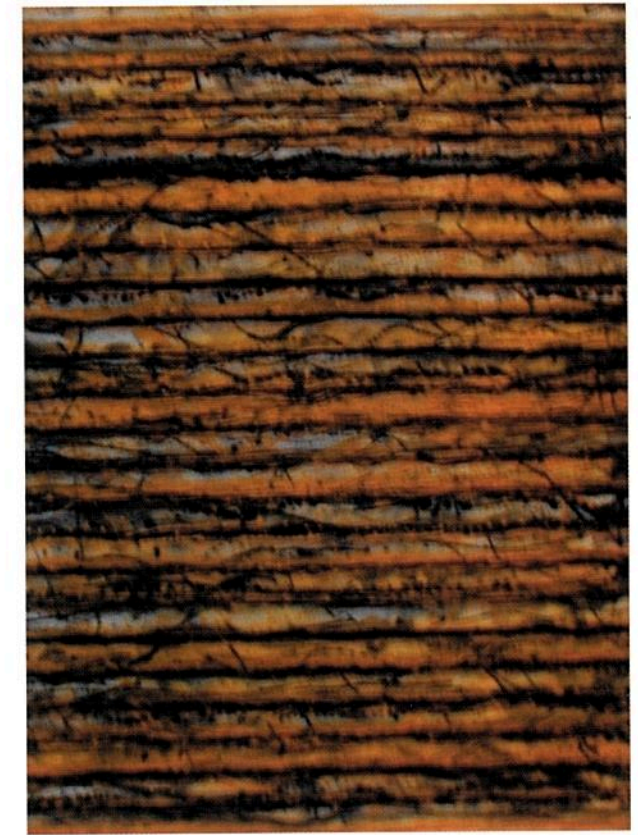
JUDY WATSON

b. 1951

Fatu Manaka
(the heart of the stomach) 1994
signed Judy Watson with
Stefan von Reiche
earth, pigments, graphite, seed
colour and acrylic on canvas
178 x 131 cm

Provenance
the artist and Mori Gallery

Exhibited
Judy Watson, *Between Islands*,
Mori Gallery, Sydney, 1996



KIM WESTCOTT

b. 1968

Sorrento II 1996-2001
etching
143 x 107 cm

Provenance
the artist and Australian Art
Resources



PHILIP WOLFHAGEN

b. 1963

Bass Strait Study No. 4
2002

signed with artist's
stamp 'Sept. 26 2002
Bass Strait study No. 4'
oil and beeswax
on linen
96 x 101 cm

Provenance
Collection the artist



JOHN WOLSELEY

b. 1938

Germination of the Dipterocarp Tree 1998

signed 'John Wolseley'
watercolour on paper
56.7 x 23.5 cm (image size)

Provenance
the artist and Roslyn Oxley9 Gallery

Exhibited
John Wolseley, Tracing the Wallace Line, Bendigo
Art Gallery, 2001; Roslyn Oxley9 Gallery,
Sydney, 2001

Literature
John Wolseley, Tracing the Wallace Line (exhibition
catalogue), Bendigo Art Gallery, 2001

JOHN YOUNG

b. 1956

Study 2 1998

etching (made with Kim Westcott)
signed and dated lower right
44.5 x 34.5 cm

Provenance
the artist and Sherman Galleries, Sydney



ANNE ZAHALKA

b. 1957

Sunday, 11.08 am 1995

Type C photograph
82 x 96 cm

Provenance
the artist and
Roslyn Oxley9 Gallery

Exhibited
group show, Roslyn Oxley9
Gallery, Sydney, 1997



ACKNOWLEDGEMENTS

This fundraising auction would not have been possible without the overwhelming generosity of each of the 85 artists who have donated works. Ivan Dougherty Gallery is tremendously indebted to them, as it is to the following individuals and galleries, who have willingly provided precious time, practical assistance and unstinting generosity:

Roslyn Oxley and
Amanda Rowell
Roslyn Oxley9 Gallery

Gene Sherman, Bill Wright
and Anthony Whelan
Sherman Galleries

Christopher Hodges
Utopia Art

Frank Watters and
Geoffrey Legge
Watters Gallery

Randy Linnegar and
Robert Linnegar
King Street Gallery on Burton

Stephen Mori and Luke Parker
Mori Gallery

Gitte Weise
Gitte Weise Gallery

Kerry Crowley
Yuill/Crowley

Matt Stafford
Australian Art Resources

Bill Nuttall
Niagara Galleries

Annandale Galleries

Australian Galleries

Boutwell Draper Gallery

Darren Knight Gallery

Josef Lebovic Gallery

Kaliman Gallery

Martin Browne Fine Art

Ray Hughes Gallery

Rex Irwin Art Dealer

Robin Gibson Gallery

Stills Gallery

Tim Olsen Gallery

The following people have
also facilitated the donation of
works and given generously of
their time:

Kate Hodgkinson
Lily Lynn
Sally McInerney
Margaret Tuckson
Nick Waterlow

We would also like to thank,
for their hard work and
commitment to the project:

Naomi Elias
Project volunteer

Annette Larkin
Christie's Australia

David Lee and Chris Folta
Contact Printing

ISBN 0 7334 1978 X

CHRISTIE'S



**IVAN
DOUGHERTY
GALLERY**

The University of New South Wales • College of Fine Arts
Selwyn Street Paddington NSW 2021 Sydney Australia
Monday to Friday 10 – 5 Saturday 1 – 5 closed public holidays
Tel +612 9385 0726 Fax 9385 0603 Email idg@unsw.edu.au www.idg.cofa.unsw.edu.au

**COFA
UNSW**