

THE
FACE
OF
SYDNEY
—
.

ISBN 0 86398 416 9

© Sydney College of Advanced Education
Published by Sydney College of Advanced Education

4 AUGUST - 25 AUGUST 1984

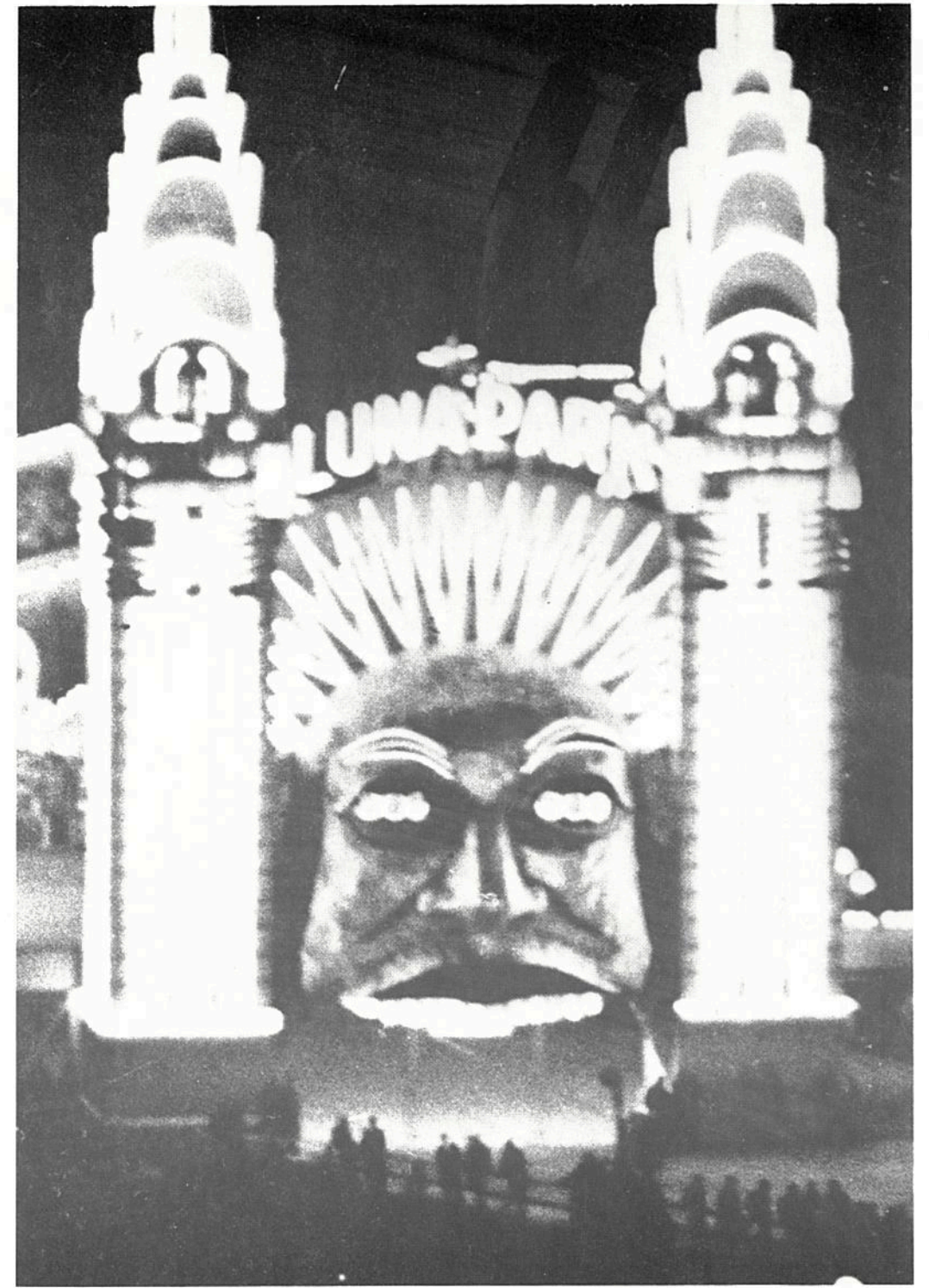


PHOTO 1

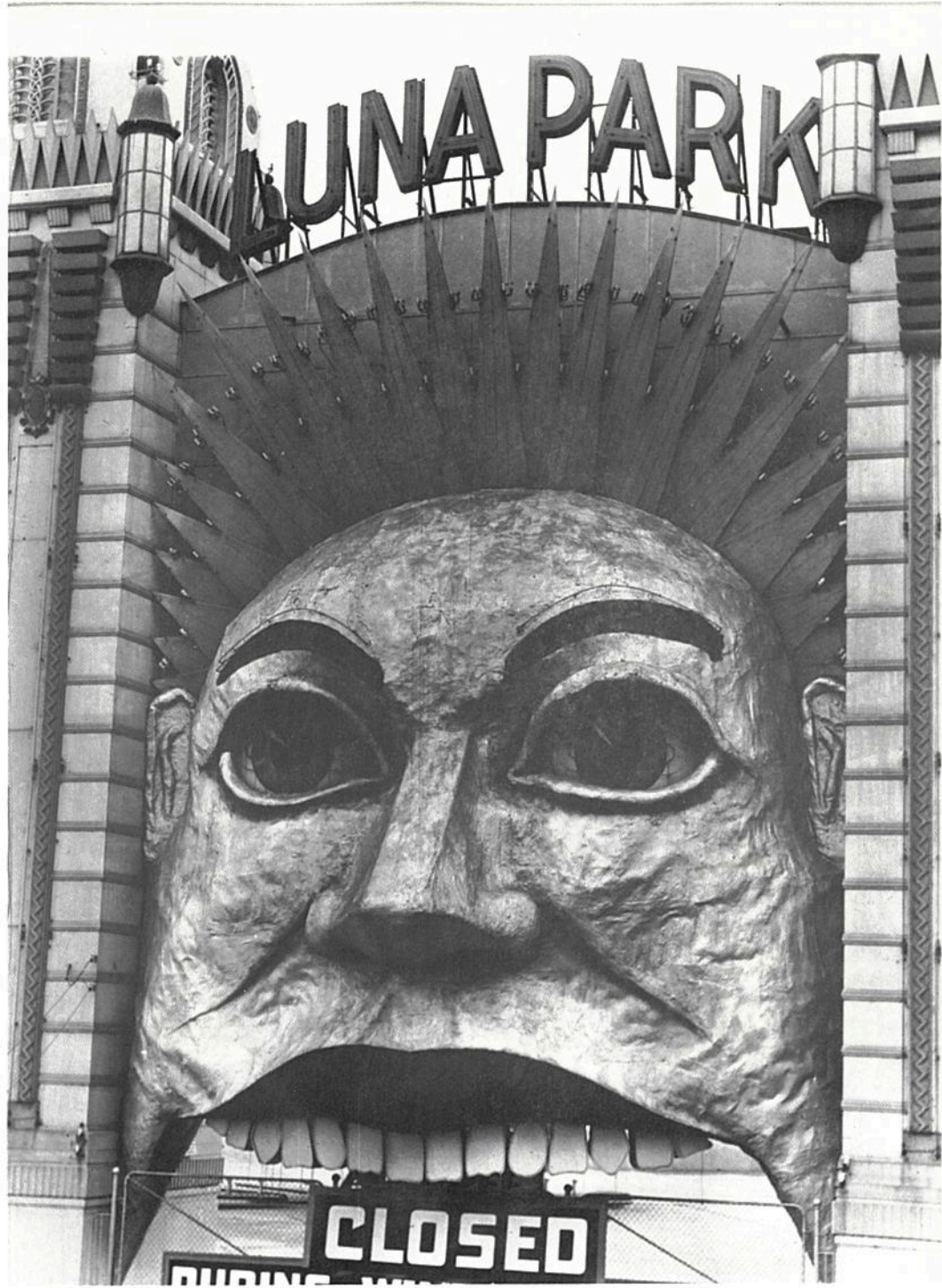


PHOTO 1A

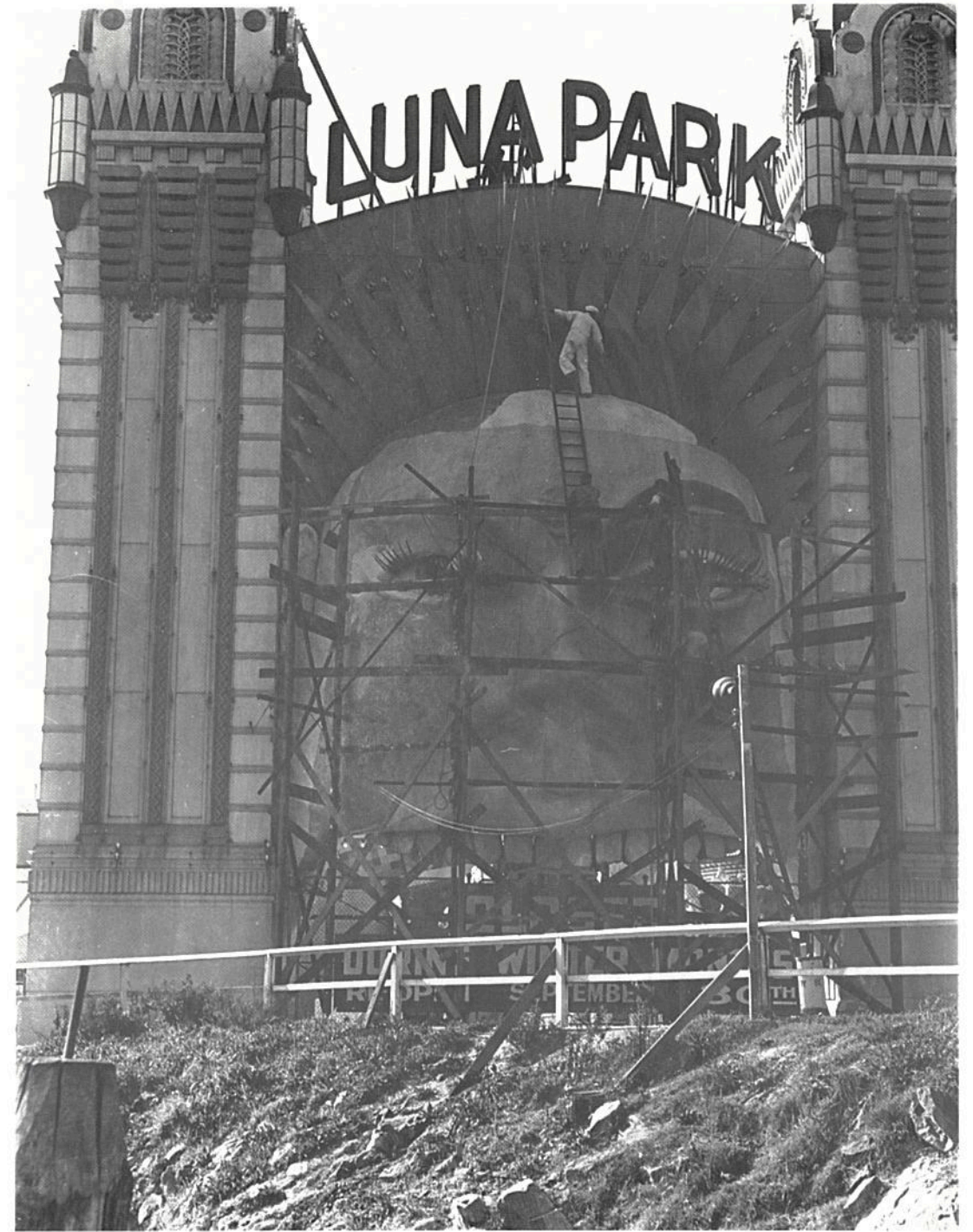


PHOTO 2



PHOTO 2A



PHOTO 3



PHOTO 3A



PHOTO 4



PHOTO 4A



PHOTO 4B



PHOTO 5

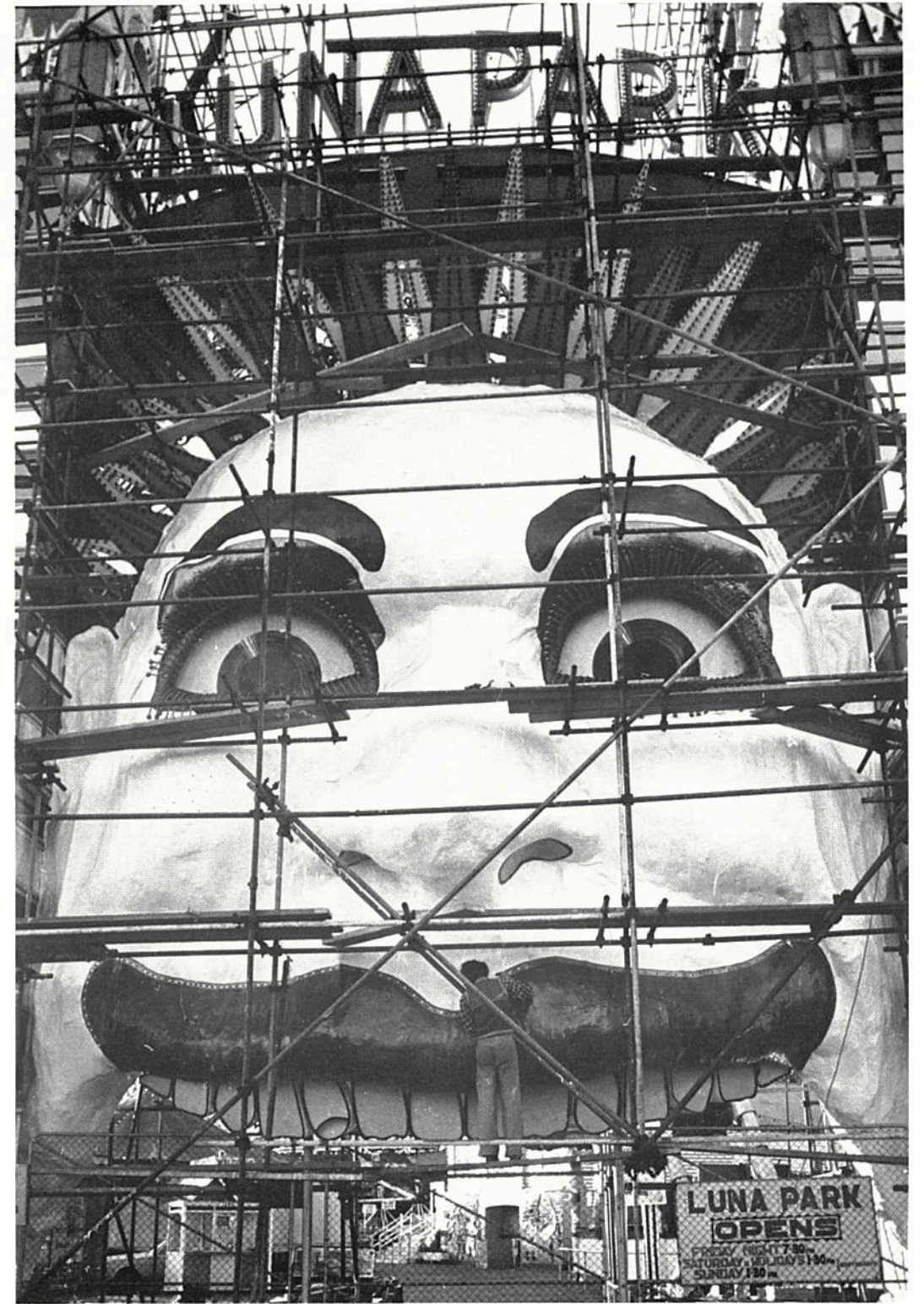


PHOTO 6



PHOTO 6A



PHOTO 6B



PHOTO 7

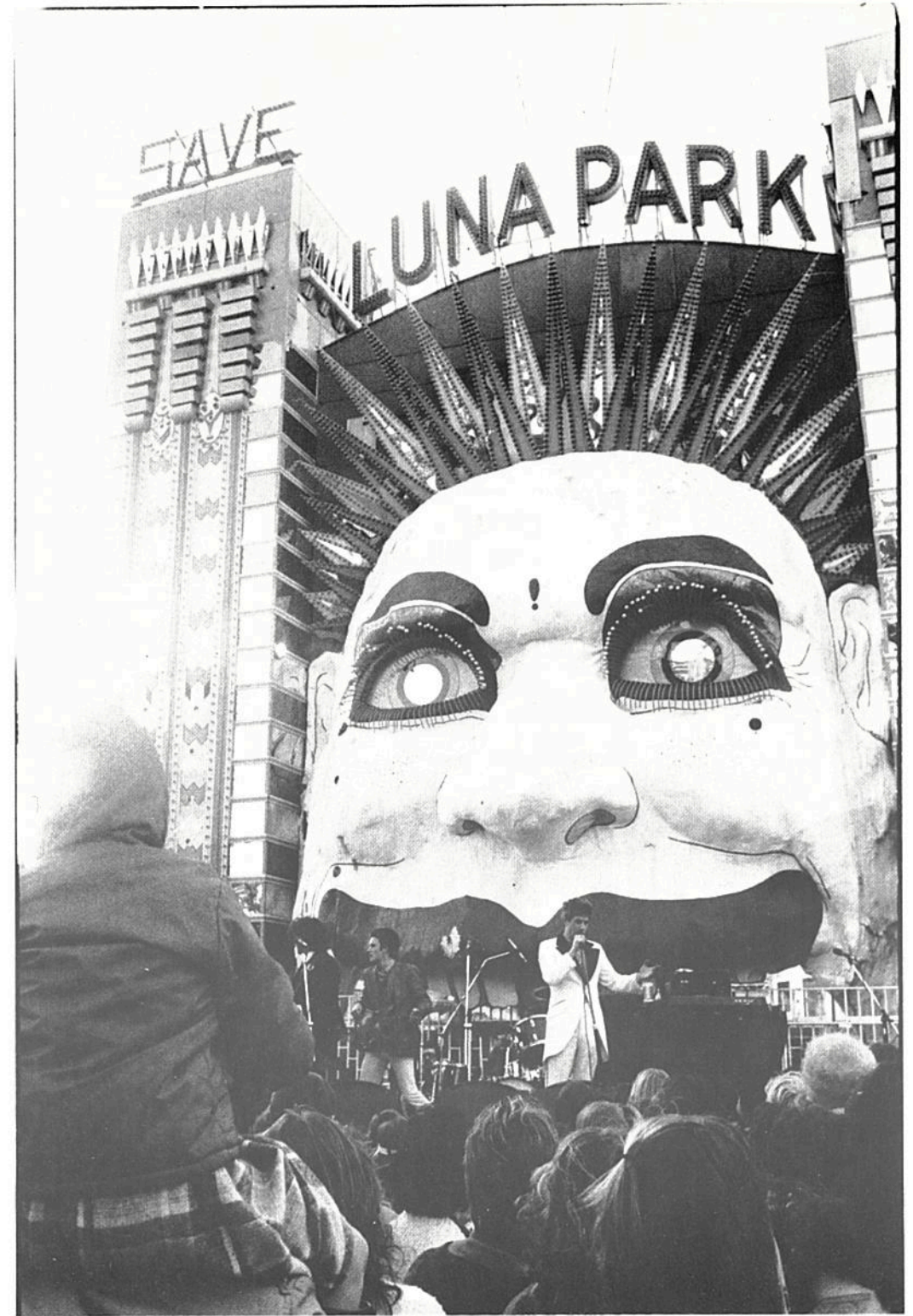


PHOTO 7A



PHOTO 8

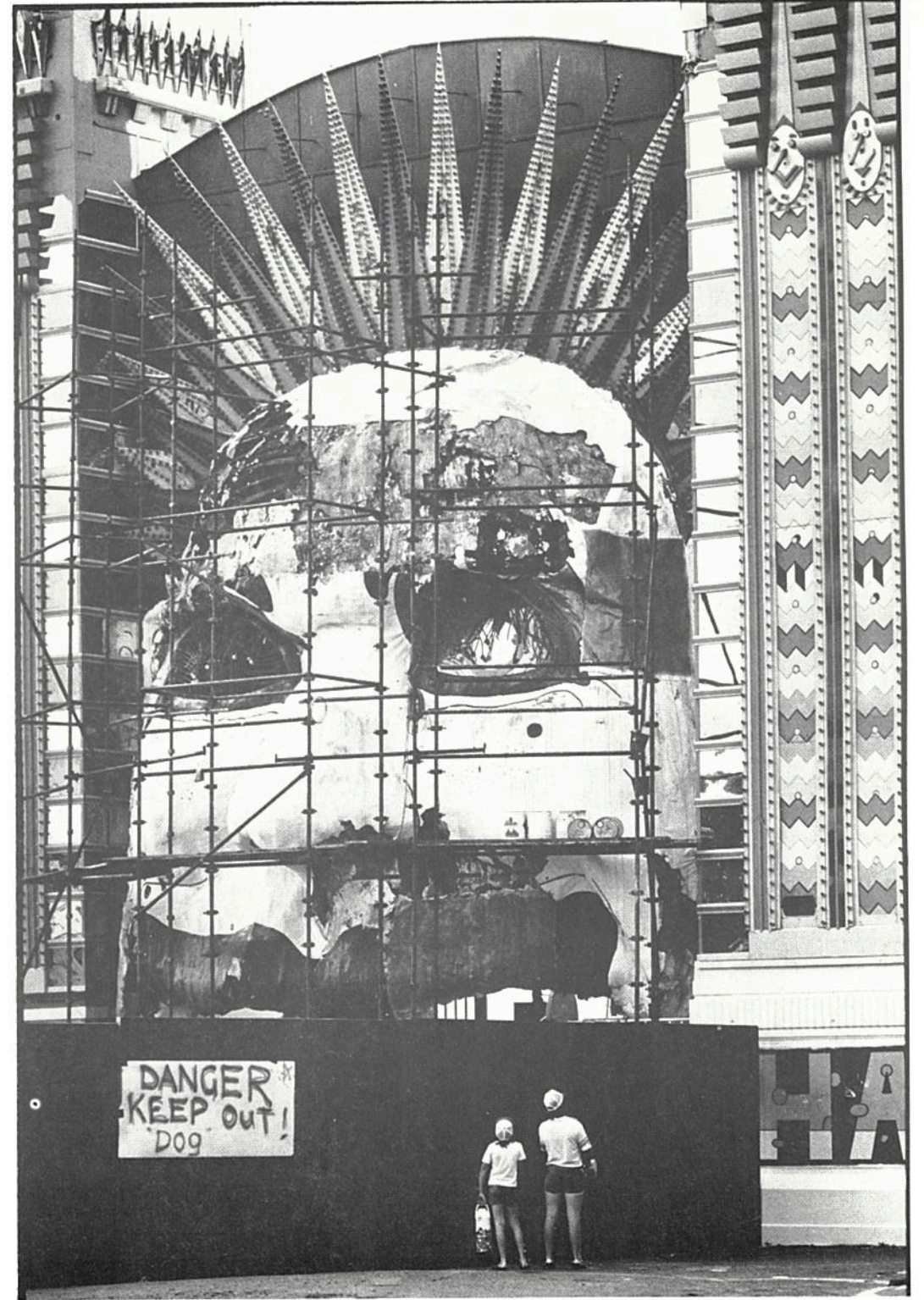


PHOTO 8A

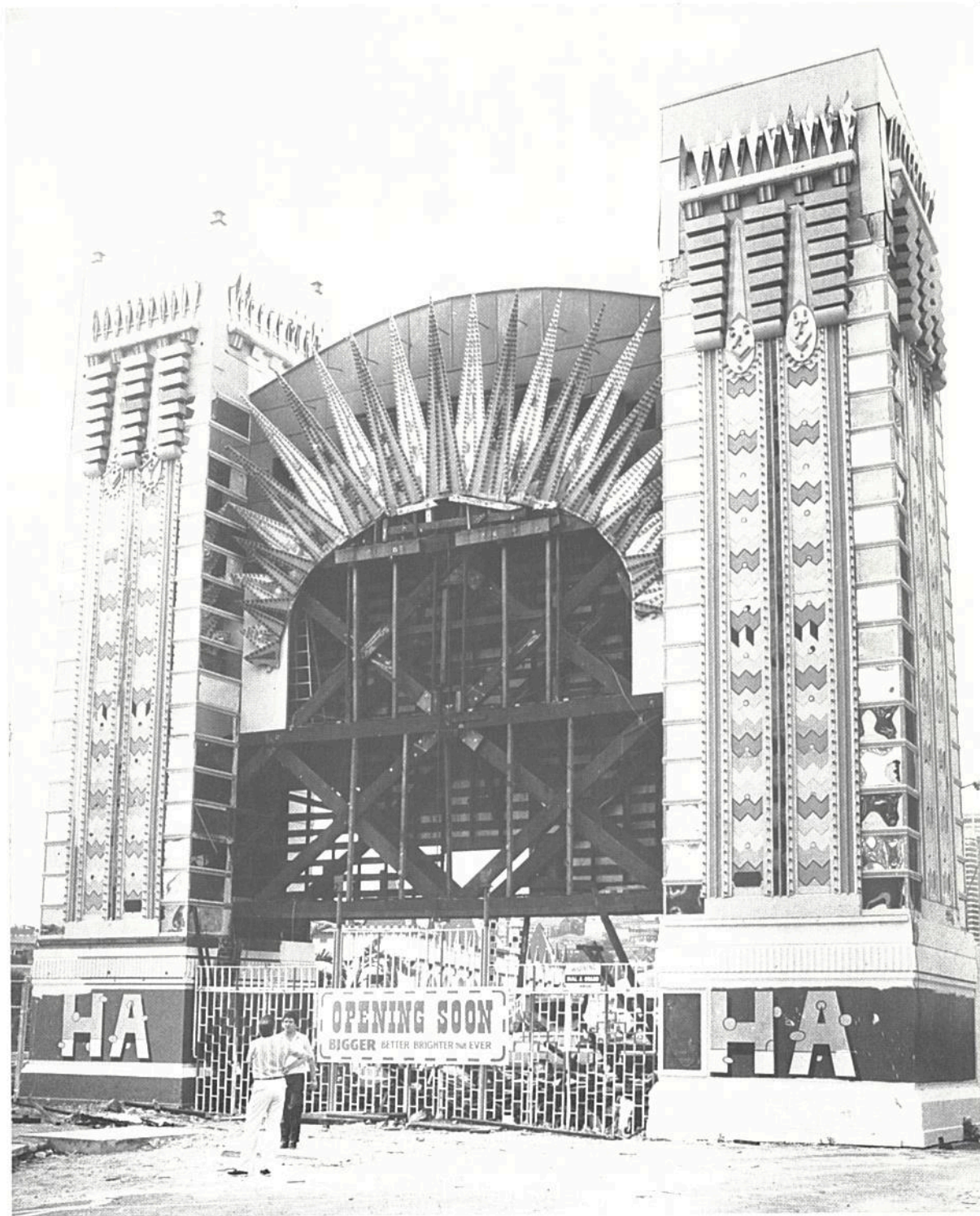


PHOTO 9



PHOTO 9A



PHOTO 10



PHOTO 11

THE FACES:

- Photo 1 RUPERT BROWN - 1935 - 1945
Rupert Brown designed the entrance including the towers. He was also the designer of Luna Park in Melbourne.
- Photo 1A Daytime shot of the Rupert Brown face.
During the war, Luna Park was 'dimmed' but was used to entertain troops. At the end of the war when the lights were restored to full power it was suspected an electrical fault caused the towers to catch fire.
- Photo 2 UNKNOWN DESIGNER - 1945 - 1955
Photo 2A The same face.
- Photo 3 UNKNOWN DESIGNER - 1955 - 1960
Photo 3A The same face.
- Photo 4 ARTHUR BARTON - Late 1960's - 1973
Photo 4A The same face
Photo 4B The same face
- Photo 5 A change to the Barton face - the face was painted in a quite pink tone - 1960's.
- Photo 6 MARTIN SHARP - 1973 - 1981
Repaint only over the Barton design
- Photo 6A Daytime shot of the Sharp face.
- Photo 6B Night shot of the same face.
- Photo 7 JUNE 20TH 1979 - AFTER THE FIRES
Photo 7A The start of the demolition of the face and buildings.
- Photo 8 1981 - WIND AND STORM DAMAGE
Photo 8A The same.
- Photo 9 1981 - Scaffolding erected to measure old face
Photo 9A New Fibreglass face being positioned.
- Photo 10 1982 - A NEW FACE
Photo 11 The same face.

ACKNOWLEDGED:

"THE FRIENDS OF LUNA PARK"

IDG

IVAN DOUGHERTY GALLERY
City Art Institute - Sydney College of Advanced Education
cnr. Albion Ave. & Selwyn St., Paddington NSW 2021